

Forest and Wood Products Training Package

Companion Volume Implementation Guide

Release 2.0 (23 November 2015)



Australian Government
Department of Industry

ForestWorks ISC activities are assisted by funding provided by the Commonwealth Government through the Department of Industry, Innovation, Climate Change, Science, Research and Tertiary Education.

Contents

Overview information	2
Version control and modification history	2
Qualifications and mapping	4
Skill sets	6
Units of competency and mapping to previous versions	8
Imported units of competency	19
Key work and training requirements in the industry	30
Regulation and licensing implications for implementation	34
Implementation information	37
What is a training package?	37
Compliance with the Australian Qualifications Framework (AQF)	37
AQF Qualifications Pathways Policy	38
Pathways chart	1
Explanation of any mandatory entry requirements for qualifications	3
Credit arrangements	3
Access and equity considerations	3
Foundation skills	4
Advice on any workplace health and safety implications in the industry	4
Resource and equipment list	5
Legal considerations for learners in the workplace/on placements	5
Links	6

Overview information

This Companion Volume Implementation Guide has been developed to assist trainers, assessors, Registered Training Organisations (RTOs) and industry representatives to deliver the Forest and Wood Products (FWP) Training Package Release 2.0. It provides advice about the structure and content of the training package, as well as an overview of its components, including: qualifications, skill sets, units of competency and assessment requirements.

Release 2.0 of the Forest and Wood Products (FWP) Training Package has been aligned and formatted to the new training package standards. It consists of

- 25 Qualifications
- 31 Skill Sets
- 328 Units of Competency

Version control and modification history

Release	Release Date	Comments
2.0	TBC	<p>Addition of one new unit FWPCOT3269 Provide specialised timber product solutions</p> <p>Revision of Certificate III in Timber Merchandising</p> <p>Updating of Certificate I to Diploma qualifications to new FWP code and year identifier</p> <p>Updating of FPI11 Skill Sets to new FWP code</p> <p>Updated units for timber treatment:</p> <ul style="list-style-type: none"> FWPSAW2210 Prepare for timber treatment operations. FWPSAW3201 Treat timber FWPSAW4201 Plan and monitor timber treatment plant operations <p>Updated forestry units:</p> <ul style="list-style-type: none"> FWPHAR3215 Operate a heavy production mobile chipper FWPHAR3221 Harvest trees manually (advanced) FWPCOT3238 Operate a pole saw <p>Transition of FPI11 units to new standards format</p> <p>Imported units updated to the most current at time of publication</p>
1.0	TBC	<p>Primary release of Forest and Wood Products (FWP) Training Package. FWP replaces FPI11 Forest and Forest Products Training Package.</p> <p>Units of Competency have been written in active voice, fatigue and sustainability requirements have been embedded and assessment requirements have been strengthened.</p> <p>Advanced Diploma - 5 new units have replaced generic BSB innovation units. The new units outline industry-specific requirements for innovative thinking, collaboration,</p>

		<p>leadership, change management, research and project management</p> <p>All Advanced Diploma units of competency have been transitioned to the new standards format</p> <p>Imported units updated to the most current at time of publication</p>
--	--	---

Qualifications and mapping

FWP qualifications and mapping to previous qualifications			
FWP Release 2.0	FPI11 Release 2.3	Comments	Equivalence
FWP10116 Certificate I in Forest and Forest Products R1	FPI10111 Certificate I in Forest and Forest Products R3		Equivalent
FWP20116 Certificate II in Forest Growing and Management R1	FPI20111 Certificate II in Forest Growing and Management R5 FPI20113 Certificate II in Forest Growing and Management R3		Equivalent
FWP20216 Certificate II in Harvesting and Haulage R1	FPI20211 Certificate II in Harvesting and Haulage R5 FPI20213 Certificate II in Harvesting and Haulage R3		Equivalent
FWP20316 Certificate II in Sawmilling and Processing R1	FPI20311 Certificate II in Sawmilling and Processing R4		Equivalent
FWP20416 Certificate II in Wood Panel Products R1	FPI20411 Certificate II in Wood Panel Products R4		Equivalent
FWP20516 Certificate II in Timber Manufactured Products R1	FPI20511 Certificate II in Timber Manufactured Products R4		Equivalent
FWP20616 Certificate II in Timber Merchandising R1	FPI20611 Certificate II in Timber Merchandising R4		Equivalent
FWP20716 Certificate II in Timber Truss and Frame Design and Manufacture R1	FPI20711 Certificate II in Timber Truss and Frame Design and Manufacture R4		Equivalent
FWP30116 Certificate III in Forest Growing and Management R1	FPI30111 Certificate III in Forest Growing and Management R4 FPI30113 Certificate III in Forest Growing and Management R3		Equivalent
FWP30216 Certificate III in Harvesting and Haulage R1	FPI30211 Certificate III in Harvesting and Haulage R4 FPI30213 Certificate III in Harvesting and Haulage R3		Equivalent
FWP30316 Certificate III in Sawmilling and Processing R1	FPI30311 Certificate III in Sawmilling and Processing R4		Equivalent
FWP30416 Certificate III in Wood Panel Products R1	FPI30411 Certificate III in Wood Panel Products R4		Equivalent
FWP30516 Certificate III in Timber Manufactured Products R1	FPI30511 Certificate III in Timber Manufactured Products R4		Equivalent
FWP30616 Certificate III in Timber Merchandising R1	FPI30611 Certificate III in Timber Merchandising R4	Unit selection more closely aligned to industry needs. See the following mapping table	Equivalent

FWP qualifications and mapping to previous qualifications			
FWP Release 2.0	FPI11 Release 2.3	Comments	Equivalence
FWP30716 Certificate III in Sawdoctoring R1	FPI30711 Certificate III in Sawdoctoring R3		Equivalent
FWP30816 Certificate III in Woodmachining R1	FPI30811 Certificate III in Woodmachining R3		Equivalent
FWP30916 Certificate III in Timber Truss and Frame Design and Manufacture R1	FPI30911 Certificate III in Timber Truss and Frame Design and Manufacture R4		Equivalent
FWP40116 Certificate IV in Forest Operations R1	FPI40111 Certificate IV in Forest Operations R4		Equivalent
FWP40216 Certificate IV in Timber Processing R1	FPI40211 Certificate IV in Timber Processing R4		Equivalent
FWP40316 Certificate IV in Timber Truss and Frame Manufacture R1	FPI40311 Certificate IV in Timber Truss and Frame Manufacture R4		Equivalent
FWP40416 Certificate IV in Timber Truss and Frame Design R1	FPI40411 Certificate IV in Timber Truss and Frame Design R4		Equivalent
FWP50116 Diploma of Forest and Forest Products R1	FPI50111 Diploma of Forest and Forest Products R3		Equivalent
FWP50216 Diploma of Timber Truss and Frame Manufacture R1	FPI50311 Diploma of Timber Truss and Frame Manufacture R3		Equivalent
FWP50316 Diploma of Timber Truss and Frame Design R1	FPI50411 Diploma of Timber Truss and Frame Design R3		Equivalent

FWP qualifications and mapping to previous qualifications			
FWP Release 2.0	FWP Release 1.0	Comments	Equivalence
Qualification code and title	Qualification code and title		
FWP60114 Advanced Diploma of Forest Industry Sustainability R1	FWP60114 Advanced Diploma of Forest Industry Sustainability R1		Equivalent

Skill sets

FWP Release 2.0		FPI11 Release 2.3		Equivalence
Skill set code	Skill set title	Skill set code	Skill set title	
FWPSS00011	Skill set for a boom delimeter operator	FPISS00011	Skill set for a boom delimeter operator	E
FWPSS00012	Skill set for a crawler/dozer operator	FPISS00012	Skill set for a crawler/dozer operator	E
FWPSS00013	Skill set for a feller buncher operator	FPISS00013	Skill set for a feller buncher operator	E
FWPSS00014	Skill set for a forwarder operator	FPISS00014	Skill set for a forwarder operator	E
FWPSS00015	Skill set for a heavy production mobile chipper operator	FPISS00015	Skill set for a heavy production mobile chipper operator	E
FWPSS00016	Skill set for a loader operator	FPISS00016	Skill set for a loader operator	E
FWPSS00017	Skill set for a mechanical processor operator	FPISS00017	Skill set for a mechanical processor operator	E
FWPSS00018	Skill set for a native forest operator	FPISS00018	Skill set for a native forest operator	E
FWPSS00019	Skill set for a plantation forest operator	FPISS00019	Skill set for a plantation forest operator	E
FWPSS00020	Skill set for a single grip harvester operator	FPISS00020	Skill set for a single grip harvester operator	E
FWPSS00021	Skill set for a skidder operator	FPISS00021	Skill set for a skidder operator	E
FWPSS00022	Skill set for an excavator operator	FPISS00022	Skill set for an excavator operator	E
FWPSS00023	Skill set for fire salvage operations	FPISS00023	Skill set for fire salvage operations	E
FWPSS00024	Skill set for off road four wheel drive operations	FPISS00024	Skill set for off road four wheel drive operations	E
FWPSS00025	Skill set for soil and water protection (roading)	FPISS00025	Skill set for soil and water protection (roading)	E
FWPSS00026	Skill set for carbon accounting	FPISS00026	Skill set for carbon accounting	E
FWPSS00027	Skill set for a forestry log truck driver	FPISS00027	Skill set for a forestry log truck driver	E
FWPSS00028	Skill set for a forestry produce truck driver	FPISS00028	Skill set for a forestry produce truck driver	E
FWPSS00029	Skill set for a finger jointing plant operator	FPISS00029	Skill set for a finger jointing plant operator	E
FWPSS00030	Skill set for a finger jointing moulder operator	FPISS00030	Skill set for a finger jointing moulder operator	E
FWPSS00031	Skill set for a finger jointing grader operator	FPISS00031	Skill set for a finger jointing grader operator	E
FWPSS00032	Skill set for a finger jointing quality control tester	FPISS00032	Skill set for a finger jointing quality control tester	E

FWP Release 2.0		FWP Release 1.0		
Skill set code	Skill set title	Skill set code	Skill set title	Equivalence
FWPSS00033	Skill set for forest and wood product innovation for leaders	FPISS00033	Skill set for forest and wood product innovation for leaders	E
FWPSS00034	Skill set for forest and wood product innovation for managers	FPISS00034	Skill set for forest and wood product innovation for managers	E
FWPSS00035	Skill set for supporting forest and wood products innovation	FPISS00035	Skill set for supporting forest and wood products innovation	E
FWPSS00036	Skill set for managing change in the forest and wood products industry	FPISS00036	Skill set for managing change in the forest and wood products industry	E
FWPSS00037	Skill set for forest and wood products industry stakeholder engagement	FPISS00037	Skill set for forest and wood products industry stakeholder engagement	E
FWPSS00038	Skill set for supporting workplace engagement in the forest and wood products industry	FPISS00038	Skill set for supporting workplace engagement in the forest and wood products industry	E
FWPSS00039	Skill set for leading business development in the forest and wood products industry	FPISS00039	Skill set for leading business development in the forest and wood products industry	E
FWPSS00040	Skill set for managing business development in the forest and wood products industry	FPISS00040	Skill set for managing business development in the forest and wood products industry	E
FWPSS00041	Skill set for supporting business development in the forest and wood products industry	FPISS00041	Skill set for supporting business development in the forest and wood products industry	E

Units of competency and mapping to previous versions

FWP Release 2.0 Unit code and title	FPI11 Release 2.3 Unit code and title	Relationship
FWPCOR2201 Work effectively in the forest and forest products industry	FPICOR2201B Work effectively in the forest and forest products industry	Equivalent
FWPCOR2202 Communicate and interact effectively in the workplace	FPICOR2202B Communicate and interact effectively in the workplace	Equivalent
FWPCOR2203 Follow environmental care procedures	FPICOR2203B Follow environmental care procedures	Equivalent
FWPCOR2204 Follow fire prevention procedures	FPICOR2204B Follow fire prevention procedures	Equivalent
FWPCOR2205 Follow WHS policies and procedures	FPICOR2205B Follow WHS policies and procedures	Equivalent
FWPCOR2207 Maintain quality and product care	FPICOR2207B Maintain quality and product care	Equivalent
FWPCOR3201 Implement safety, health and environment policies and procedures	FPICOR3201B Implement safety, health and environment policies and procedures	Equivalent
FWPCOR3202 Conduct quality and product care procedures	FPICOR3202B Conduct quality and product care procedures	Equivalent
FWPCOR3203 Evaluate fire potential and prevention	FPICOR3203B Evaluate fire potential and prevention	Equivalent
FWPCOR3204 Visually assess materials	FPICOR3204B Visually assess materials	Equivalent
FWPCOR4201 Monitor safety, health and environment policies and procedures	FPICOR4201B Monitor safety, health and environment policies and procedures	Equivalent
FWPCOR4202 Monitor and review forestry operations	FPICOR4202B Monitor and review forestry operations	Equivalent
FWPCOR4203 Monitor quality and product care procedures	FPICOR4203B Monitor quality and product care procedures	Equivalent
FWPCOT2201 Stack and bind material	FPICOT2201B Stack and bind material	Equivalent
FWPCOT2202 Rack material	FPICOT2202B Rack material	Equivalent
FWPCOT2203 Finish and pack products	FPICOT2203B Finish products	Equivalent
FWPCOT2205 Tail out materials	FPICOT2205B Tail out materials	Equivalent
FWPCOT2207 Dress boards and timber	FPICOT2207B Dress boards and timber	Equivalent
FWPCOT2208 Resaw boards and timber	FPICOT2208B Resaw boards and timber	Equivalent
FWPCOT2209 Produce finger jointed timber	FPICOT2209B Produce finger jointed timber	Equivalent
FWPCOT2210 Tally material	FPICOT2210B Tally material	Equivalent
FWPCOT2211 Produce pointed timber products	FPICOT2211B Produce pointed timber products	Equivalent
FWPCOT2212 Grade hardwood sawn and milled products	FPICOT2212B Grade hardwood sawn and milled products	Equivalent
FWPCOT2213 Grade softwood sawn and milled products	FPICOT2213B Grade softwood sawn and milled products	Equivalent
FWPCOT2214 Grade cypress sawn and milled products	FPICOT2214B Grade cypress sawn and milled products	Equivalent
FWPCOT2215 Visually stress grade hardwood	FPICOT2215B Visually stress grade hardwood	Equivalent
FWPCOT2216 Visually stress grade softwood	FPICOT2216B Visually stress grade softwood	Equivalent
FWPCOT2217 Visually stress grade cypress	FPICOT2217B Visually stress grade cypress	Equivalent

FWPCOT2218 Cross cut materials with a fixed saw	FPICOT2218B Cross cut materials with a fixed saw	Equivalent
FWPCOT2219 Use hand-held tools	FPICOT2219B Use hand-held tools	Equivalent
FWPCOT2220 Select trees for tending operations	FPICOT2220B Select trees for tending operations	Equivalent
FWPCOT2222 Produce laminated beams	FPICOT2222B Produce laminated beams	Equivalent
FWPCOT2223 Segregate and sort logs	FPICOT2223B Segregate and sort logs	Equivalent
FWPCOT2224 Band edges of panels	FPICOT2224B Band edges of panels	Equivalent
FWPCOT2225 Chip or flake wood	FPICOT2225B Chip or flake wood	Equivalent
FWPCOT2226 Debark logs mechanically	FPICOT2226B Debark logs mechanically	Equivalent
FWPCOT2227 Process orders and despatch products	FPICOT2227B Process orders and despatch products	Equivalent
FWPCOT2228 Store materials	FPICOT2228B Store materials	Equivalent
FWPCOT2229 Dock material to length	FPICOT2229B Dock material to length	Equivalent
FWPCOT2230 Assemble products	FPICOT2230B Assemble products	Equivalent
FWPCOT2231 Pack products	FPICOT2231B Pack products	Equivalent
FWPCOT2232 Cut material to shape using a saw	FPICOT2232B Cut material to shape using a saw	Equivalent
FWPCOT2233 Navigate in forest areas	FPICOT2233B Navigate in forest areas	Equivalent
FWPCOT2235 Assess timber for manufacturing potential	FPICOT2235A Assess timber for manufacturing potential	Equivalent
FWPCOT2236 Fall trees manually (basic)	FPICOT2236 Fall trees manually (basic)	Equivalent
FWPCOT2237 Maintain chainsaws	FPICOT2237A Maintain chainsaws	Equivalent
FWPCOT2238 Cut materials with a hand-held chainsaw	FPICOT2238A Cut materials with a hand-held chainsaw	Equivalent
FWPCOT2239 Trim and cut felled trees	FPICOT2239A Trim and cut felled trees	Equivalent
FWPCOT2240 Cut material with a pole saw	FPICOT2240 Cut material with a pole saw	Equivalent
FWPCOT2241 Apply wood and timber product knowledge	FPICOT2241 Apply wood and timber product knowledge	Equivalent
FWPCOT3201 Hand sharpen knives and blades	FPICOT3201B Hand sharpen knives and blades	Equivalent
FWPCOT3202 Navigate in remote or trackless areas	FPICOT3202B Navigate in remote or trackless areas	Equivalent
FWPCOT3203 Weigh loads	FPICOT3203B Weigh loads	Equivalent
FWPCOT3204 Prepare and interpret sketches and drawings	FPICOT3204B Prepare and interpret sketches and drawings	Equivalent
FWPCOT3205 Dress boards using multi-headed machines	FPICOT3205B Dress boards using multi-headed machines	Equivalent
FWPCOT3206 Cut material using high speed optimiser	FPICOT3206B Cut material using high speed optimiser	Equivalent
FWPCOT3207 Set up, operate and maintain finger jointing operations	FPICOT3207B Set up, operate and maintain finger jointing operations	Equivalent
FWPCOT3208 Test strength of joints	FPICOT3208B Test strength of joints	Equivalent
FWPCOT3209 Set up, operate and maintain end matching operations	FPICOT3209B Set up, operate and maintain end matching operations	Equivalent
FWPCOT3210 Sharpen cutting tools	FPICOT3210B Sharpen cutting tools	Equivalent
FWPCOT3211 Maintain sawdoctoring tools	FPICOT3211B Maintain sawdoctoring tools	Equivalent
FWPCOT3212 Replace saws, blades and guides	FPICOT3212B Replace saws, blades and guides	Equivalent

FWPCOT3213 Manufacture cutting tools	FPICOT3213B Manufacture cutting tools	Equivalent
FWPCOT3214 Take off material quantities	FPICOT3214B Take off material quantities	Equivalent
FWPCOT3215 Swage and shape saw blades	FPICOT3215B Swage and shape saw blades	Equivalent
FWPCOT3216 Assess and maintain saw performance	FPICOT3216B Assess and maintain saw performance	Equivalent
FWPCOT3217 Assess and maintain cutter performance	FPICOT3217B Assess and maintain cutter performance	Equivalent
FWPCOT3218 Quote and interpret from manufactured timber product plans	FPICOT3218B Quote and interpret from manufactured timber product plans	Equivalent
FWPCOT3219 Produce standard truss or frame plans and details using computers	FPICOT3219B Produce standard truss or frame plans and details using computers	Equivalent
FWPCOT3220 Quote and interpret from computerised timber manufactured product plans	FPICOT3220B Quote and interpret from computerised timber manufactured product plans	Equivalent
FWPCOT3221 Rehabilitate tracks, quarries and landings	FPICOT3221B Rehabilitate tracks, quarries and landings	Equivalent
FWPCOT3222 Present forestry information and interpretations programs	FPICOT3222B Present forestry information and interpretations programs	Equivalent
FWPCOT3223 Grade and mark logs	FPICOT3223B Grade and mark logs	Equivalent
FWPCOT3224 Plan and monitor equipment maintenance	FPICOT3224B Plan and monitor equipment maintenance	Equivalent
FWPCOT3225 Mechanically stress grade timber	FPICOT3225B Mechanically stress grade timber	Equivalent
FWPCOT3227 Receive and measure logs	FPICOT3227B Receive and measure logs	Equivalent
FWPCOT3228 Plane/sand panels	FPICOT3228B Plane/sand panels	Equivalent
FWPCOT3229 Mechanically stress grade panels	FPICOT3229B Mechanically stress grade panels	Equivalent
FWPCOT3230 Operate automated stacking equipment	FPICOT3230B Operate automated stacking equipment	Equivalent
FWPCOT3231 Operate steam boiler	FPICOT3231B Operate steam boiler	Equivalent
FWPCOT3232 Operate heat plant	FPICOT3232B Operate heat plant	Equivalent
FWPCOT3233 Sharpen and align blades and knives	FPICOT3233B Sharpen and align blades and knives	Equivalent
FWPCOT3234 Cut material using CNC sizing machines	FPICOT3234B Cut material using CNC sizing machines	Equivalent
FWPCOT3235 Machine material using CNC machining and processing centres	FPICOT3235B Machine material using CNC machining and processing centres	Equivalent
FWPCOT3236 Coordinate stock control procedures	FPICOT3236B Coordinate stock control procedures	Equivalent
FWPCOT3237 Produce templates	FPICOT3237B Produce templates	Equivalent
FWPCOT3238 Operate a pole saw	FPICOT3238B Operate a pole saw	Equivalent
FWPCOT3239 Create drawings using computer aided design systems	FPICOT3239B Create drawings using computer aided design systems	Equivalent
FWPCOT3240 Grade heavy structural/engineered products	FPICOT3240B Grade heavy structural/engineered products	Equivalent
FWPCOT3241 Assemble timber wall frames	FPICOT3241B Assemble timber wall frames	Equivalent
FWPCOT3242 Lay up timber roof trusses	FPICOT3242B Lay up timber roof trusses	Equivalent
FWPCOT3243 Operate a truss press	FPICOT3243B Operate a truss press	Equivalent
FWPCOT3244 Cut material to profile	FPICOT3244B Cut material to profile	Equivalent

FWPCOT3245 Grade, sort and mark materials	FPICOT3245B Grade, sort and mark material	Equivalent
FWPCOT3246 Test heavy structural/engineered products	FPICOT3246B Test heavy structural/engineered products	Equivalent
FWPCOT3247 Select timber for forestry operations	FPICOT3247B Select timber for forestry operations	Equivalent
FWPCOT3248 Dry timber in solar assisted kilns	FPICOT3248A Dry timber in solar assisted kilns	Equivalent
FWPCOT3249 Select timber preservation techniques	FPICOT3249A Select timber preservation techniques	Equivalent
FWPCOT3250 Prepare timber to meet import/export compliance requirements	FPICOT3250A Prepare timber to meet import/export compliance requirements	Equivalent
FWPCOT3251 Promote the carbon benefits of wood products	FPICOT3251A Promote the carbon benefits of wood products	Equivalent
FWPCOT3252 Use environmental care procedures to undertake fire salvage operations	FPICOT3252A Use environmental care procedures to undertake fire salvage operations	Equivalent
FWPCOT3253 Convert timber residue into products for further use	FPICOT3253A Convert timber residue into products for further use	Equivalent
FWPCOT3254 Implement environmentally sustainable work practices in the work area/work site	FPICOT3254A Implement environmentally sustainable work practices in the work area/work site	Equivalent
FWPCOT3255 Apply silvicultural principles	FPICOT3255 Apply silviculture principles	Equivalent
FWPCOT3256 Apply biodiversity protection principles	FPICOT3256 Apply biodiversity protection principles	Equivalent
FWPCOT3257 Follow cultural heritage requirements	FPICOT3257 Follow cultural heritage requirements	Equivalent
FWPCOT3258 Comply with soil and water protection	FPICOT3258 Comply with soil and water protection	Equivalent
FWPCOT3259 Operate a four wheel drive on unsealed roads	FPICOT3259 Operate a four wheel drive on unsealed roads	Equivalent
FWPCOT3260 Recover four wheel drive vehicles	FPICOT3260 Recover four wheel drive vehicles	Equivalent
FWPCOT3261 Transport forestry logs using trucks	FPICOT3261 Transport forestry logs using trucks	Equivalent
FWPCOT3262 Transport forestry produce using trucks	FPICOT3262 Transport forestry produce using trucks	Equivalent
FWPCOT3263 Maintain and contribute to energy efficiency	FPICOT3263 Maintain and contribute to energy efficiency	Equivalent
FWPCOT3264 Build and maintain timber stacks	FPICOT3264 Build and maintain timber stacks	Equivalent
FWPCOT3269 Provide specialised timber product solutions	N/N	New unit
FWPCOT4201 Produce complex truss and frame plans and details using computers	FPICOT4201B Produce complex truss and frame plans and details using computers	Equivalent
FWPCOT4202 Design timber structures	FPICOT4202B Design timber structures	Equivalent
FWPCOT4203 Plan and coordinate product assembly	FPICOT4203B Plan and coordinate product assembly	Equivalent
FWPCOT4204 Schedule and coordinate load shifting	FPICOT4204B Schedule and coordinate load shifting	Equivalent
FWPCOT4205 Coordinate log debarking operations	FPICOT4205B Coordinate log debarking operations	Equivalent
FWPCOT4206 Plan and coordinate boiler operations	FPICOT4206B Plan and coordinate boiler operations	Equivalent

FWPCOT4207 Plan and coordinate heat plant operations	FPICOT4207B Plan and coordinate heat plant operations	Equivalent
FWPCOT5203 Manage installation and commissioning of equipment	FPICOT5203B Manage installation and commissioning of equipment	Equivalent
FWPCOT5204 Organise enterprise maintenance programs	FPICOT5204B Organise enterprise maintenance programs	Equivalent
FWPFGM2201 Collect seed	FPIFGM2201B Collect seed	Equivalent
FWPFGM2202 Prepare seeded	FPIFGM2202B Prepare seedbed	Equivalent
FWPFGM2203 Plant trees by hand	FPIFGM2203B Plant trees by hand	Equivalent
FWPFGM2204 Plant trees mechanically	FPIFGM2204B Plant trees mechanically	Equivalent
FWPFGM2205 Prune trees	FPIFGM2205B Prune trees	Equivalent
FWPFGM2206 Collect data or samples for assessment	FPIFGM2206B Collect data or samples for assessment	Equivalent
FWPFGM2207 Undertake brushcutting operations	FPIFGM2207B Undertake brushcutting operations	Equivalent
FWPFGM2209 Cut, sort and set cuttings	FPIFGM2209B Cut, sort and set cuttings	Equivalent
FWPFGM2210 Implement animal pest control procedures	FPIFGM2210B Implement animal pest control procedures	Equivalent
FWPFGM2211 Detect fires	FPIFGM2211B Detect fires	Equivalent
FWPFGM2212 Graft cuttings	FPIFGM2212B Graft cuttings	Equivalent
FWPFGM2213 Process seed	FPIFGM2213B Process seed	Equivalent
FWPFGM2214 Maintain visitor sites	FPIFGM2214B Maintain visitor sites	Equivalent
FWPFGM2215 Measure trees	FPIFGM2215B Measure trees	Equivalent
FWPFGM3201 Manage seed collection	FPIFGM3201B Manage seed collection	Equivalent
FWPFGM3202 Extract seed	FPIFGM3202B Extract seed	Equivalent
FWPFGM3203 Conduct an instrument survey	FPIFGM3203B Conduct an instrument survey	Equivalent
FWPFGM3206 Plan and implement non-commercial thinning operations	FPIFGM3206B Plan and implement non-commercial thinning operations	Equivalent
FWPFGM3207 Coordinate stem improvement	FPIFGM3207B Coordinate stem improvement	Equivalent
FWPFGM3209 Construct and maintain forest roads and tracks	FPIFGM3209B Construct and maintain forest roads and tracks	Equivalent
FWPFGM3210 Patrol forest	FPIFGM3210B Patrol forest	Equivalent
FWPFGM3211 Manage coppice stems	FPIFGM3211B Manage coppice stems	Equivalent
FWPFGM3212 Fall trees manually (intermediate)	FPIFGM3212 Fall trees manually (intermediate)	Equivalent
FWPFGM3213 Fall trees manually (advanced)	FPIFGM3213 Fall trees manually (advanced)	Equivalent
FWPFGM3214 Operate a four wheel drive in a towing situation	FPIFGM3214 Operate a four wheel drive in a towing situation	Equivalent
FWPFGM3215 Perform complex 4x4 operations	FPIFGM3215 Perform complex 4x4 operations	Equivalent
FWPFGM4201 Implement a forest establishment plan	FPIFGM4201B Implement a forest establishment plan	Equivalent
FWPFGM4202 Manage stand health	FPIFGM4202B Manage stand health	Equivalent
FWPFGM4203 Design plantations	FPIFGM4203B Design plantations	Equivalent
FWPFGM4204 Conduct a pests and diseases assessment	FPIFGM4204B Conduct a pests and diseases assessment	Equivalent
FWPFGM4205 Monitor regeneration rates	FPIFGM4205B Monitor regeneration rates	Equivalent

FWPFGM4206 Conduct a wood volume and yield assessment	FPIFGM4206B Conduct a wood volume and yield assessment	Equivalent
FWPFGM4207 Conduct a forest site assessment	FPIFGM4207B Conduct a forest site assessment	Equivalent
FWPFGM4208 Plan a quarry	FPIFGM4208B Plan a quarry	Equivalent
FWPFGM4209 Interpret and use aerial photographs for forest management	FPIFGM4209B Interpret and use aerial photographs for forest management	Equivalent
FWPFGM4210 Prepare a tender	FPIFGM4210B Prepare a tender	Equivalent
FWPFGM5201 Plan and manage an inventory program	FPIFGM5201B Plan and manage an inventory program	Equivalent
FWPFGM5208 Manage road construction and maintenance	FPIFGM5208B Manage road construction and maintenance	Equivalent
FWPFGM5210 Manage tending operations in a native forest	FPIFGM5210A Manage tending operations in a native forest	Equivalent
FWPFGM5211 Coordinate stand nutrition	FPIFGM5211A Coordinate stand nutrition	Equivalent
FWPFGM5212 Manage genetic resources	FPIFGM5212A Manage genetic resources	Equivalent
FWPFGM5213 Coordinate plantation tending operations	FPIFGM5213A Coordinate plantation tending operations	Equivalent
FWPFGM5214 Develop a native forest regeneration plan	FGPIFGM5214A Develop a native forest regeneration plan	Equivalent
FWPFGM5215 Breed Trees	FPIFGM5215A Breed Trees	Equivalent
FWPFGM5216 Manage coupe planning	FPIFGM5216A Manage coupe planning	Equivalent
FWPHAR2203 Hook up felled logs using cables (choker)	FPIHAR2203B Hook up felled logs using cables (choker)	Equivalent
FWPHAR2204 Perform landing duties (chaser)	FPIHAR2204B Perform landing duties (chaser)	Equivalent
FWPHAR2205 Conduct mobile splitting operations	FPIHAR2205B Conduct mobile splitting operations	Equivalent
FWPHAR2206 Operate a mobile chipper/mulcher	FWPHAR2206B Operate a mobile chipper/mulcher	Equivalent
FWPHAR2207 Trim and cut harvested trees	FPIHAR2207A Trim and cut harvested trees	Equivalent
FWPHAR3201 Monitor log recovery (rigging slinger)	FPIHAR3201B Monitor log recovery (rigging slinger)	Equivalent
FWPHAR3206 Conduct forwarder operations	FPIHAR3206C Conduct forwarder operations	Equivalent
FWPHAR3207 Conduct feller buncher operations	FPIHAR3207C Conduct feller buncher operations	Equivalent
FWPHAR3208 Conduct boom delimeter operations	FPIHAR3208C Conduct boom delimeter operations	Equivalent
FWPHAR3210 Conduct mechanical processor operations	FPIHAR3210C Conduct mechanical processor operations	Equivalent
FWPHAR3211 Operate yarder	FPIHAR3211B Operate yarder	Equivalent
FWPHAR3213 Conduct mechanically assisted tree falling operations	FPIHAR3213B Conduct mechanically assisted tree falling operations	Equivalent
FWPHAR3214 Operate a single grip harvester	FPIHAR3214C Operate a single grip harvester	Equivalent
FWPHAR3215 Operate a heavy production mobile chipper	FPIHAR3215C Operate a heavy production mobile chipper	Equivalent
FWPHAR3216 Conduct forestry operations using crawler tractor	FPIHAR3216A Conduct forestry operations using crawler tractor	Equivalent
FWPHAR3217 Conduct skidder operations	FPIHAR3217A Conduct skidder operations	Equivalent
FWPHAR3218 Conduct loader operations	FPIHAR3218A Conduct loader operations	Equivalent

FWPHAR3219 Conduct excavator operations with grabs	FPIHAR3219A Conduct excavator operations with grabs	Equivalent
FWPHAR3220 Harvest trees manually (intermediate)	FPIHAR3220 Harvest trees manually (intermediate)	Equivalent
FWPHAR3221 Harvest trees manually (advanced)	FPIHAR3221 Harvest trees manually (advanced)	Equivalent
FWPHAR4201 Apply tree jacking techniques	FPIHAR4201B Apply tree jacking techniques	Equivalent
FWPHAR4202 Coordinate log recovery (hook tender)	FPIHAR4202B Coordinate log recovery (hook tender)	Equivalent
FWPHAR4203 Design log landings and snig tracks	FPIHAR4203B Design log landings and snig tracks	Equivalent
FWPHAR4204 Plan and coordinate fire salvage operations	FPIHAR4204B Plan and coordinate fire salvage operations	Equivalent
FWPHAR4205 Implement harvesting plans	FPIHAR4205B Implement harvesting plans	Equivalent
FWPHAR5201 Design harvesting plans	FPIHAR5201B Design harvesting plans	Equivalent
FWPSAW2201 Grade round poles and debarked logs	FPISAW2201B Grade round poles and debarked logs	Equivalent
FWPSAW2202 Sort boards manually	FPISAW2202B Sort boards manually	Equivalent
FWPSAW2203 Sort boards mechanically	FPISAW2203B Sort boards mechanically	Equivalent
FWPSAW2204 Dock boards with mechanical feed	FPISAW2204B Dock boards with mechanical feed	Equivalent
FWPSAW2205 Assemble materials using nail plates	FPISAW2205B Assemble materials using nail plates	Equivalent
FWPSAW2206 De-stack seasoning racks	FPISAW2206B De-stack seasoning racks	Equivalent
FWPSAW2207 Round softwood logs	FPISAW2207B Round softwood logs	Equivalent
FWPSAW2208 Split wood products	FPISAW2208B Split wood products	Equivalent
FWPSAW2209 Dismantle, transport and assemble hand portable sawmill	FPISAW2209B Dismantle, transport and assemble hand portable sawmill	Equivalent
FWPSAW2210 Prepare for timber treatment operations	FPISAW2210B Prepare for timber treatment operations	Equivalent
FWPSAW3201 Treat timber	FPISAW3201B Treat timber	Equivalent
FWPSAW3202 Produce sawn green boards	FPISAW3202B Produce sawn green boards	Equivalent
FWPSAW3203 Break down logs	FPISAW3203B Break down logs	Equivalent
FWPSAW3204 Saw flitches and cants	FPISAW3204B Saw flitches and cants	Equivalent
FWPSAW3205 Dry hardwood	FPISAW3205B Dry hardwood	Equivalent
FWPSAW3206 Dry softwood	FPISAW3206B Dry softwood	Equivalent
FWPSAW3207 Sharpen band saws	FPISAW3207B Sharpen band saws	Equivalent
FWPSAW3208 Sharpen circular saws	FPISAW3208B Sharpen circular saws	Equivalent
FWPSAW3209 Align sawing production systems	FPISAW3209B Align sawing production systems	Equivalent
FWPSAW3210 File and set saws	FPISAW3210B File and set saws	Equivalent
FWPSAW3211 Recondition guides	FPISAW3211B Recondition guides	Equivalent
FWPSAW3212 Sharpen tipped circular saws	FPISAW3212B Sharpen tipped circular saws	Equivalent
FWPSAW3213 Level and tension circular saws	FPISAW3213B Level and tension circular saws	Equivalent
FWPSAW3214 Join band saw blades	FPISAW3214B Join band saw blades	Equivalent
FWPSAW3215 Screen wood chips	FPISAW3215B Screen wood chips	Equivalent
FWPSAW3216 Transfer wood chips	FPISAW3216B Transfer wood chips	Equivalent

FWPSAW3217 Hard face saw teeth	FPISAW3217B Hard face saw teeth	Equivalent
FWPSAW3218 Replace tungsten tips	FPISAW3218B Replace tungsten tips	Equivalent
FWPSAW3219 Replace stellite tips	FPISAW3219B Replace stellite tips	Equivalent
FWPSAW3220 Maintain wide band saw blades	FPISAW3220B Maintain wide band saw blades	Equivalent
FWPSAW3221 Profile saw blanks	FPISAW3221B Profile saw blanks	Equivalent
FWPSAW3222 Recondition band mill wheels	FPISAW3222B Recondition band mill wheels	Equivalent
FWPSAW3223 Assess wood chips	FPISAW3223B Assess wood chips	Equivalent
FWPSAW3224 Coordinate and monitor the wood chip stockpile	FPISAW3224B Coordinate and monitor the wood chip stockpile	Equivalent
FWPSAW3225 Maintain frame saw blades	FPISAW3225B Maintain frame saw blades	Equivalent
FWPSAW3226 Saw logs using CNC optimising systems	FPISAW3226B Saw logs using CNC optimising systems	Equivalent
FWPSAW3227 Select and saw logs in multi-species operations	FPISAW3227B Select and saw logs in multi-species operations	Equivalent
FWPSAW3228 Apply principles of blade design to sawing procedures	FPISAW3228B Apply principles of blade design to sawing procedures	Equivalent
FWPSAW3229 Operate a portable sawmill	FPISAW3229B Operate a portable sawmill	Equivalent
FWPSAW4201 Plan and monitor timber treatment plant operations	FPISAW4201 Plan and monitor timber treatment plant operations	Equivalent
FWPSAW4202 Plan and monitor saw log operations	FPISAW4202B Plan and monitor saw log operations	Equivalent
FWPSAW4203 Coordinate timber drying operations	FPISAW4203B Coordinate timber drying operations	Equivalent
FWPSAW4204 Plan and monitor board conversion	FPISAW4204B Plan and monitor board conversion	Equivalent
FWPTMM2201 Cut material to length and angles	FPITMM2201B Cut material to length and angles	Equivalent
FWPTMM2202 Machine material	FPITMM2202B Machine material	Equivalent
FWPTMM2203 Read and interpret timber truss, floor and/or frame fabrication plans	FPITMM2203A Read and interpret timber truss, floor and/or frame fabrication plans	Equivalent
FWPTMM3201 Convert timber	FPITMM3201B Convert timber	Equivalent
FWPTMM3202 Manufacture using joinery machines	FPITMM3202B Manufacture using joinery machines	Equivalent
FWPTMM3203 Estimate and cost job	FPITMM3203B Estimate and cost job	Equivalent
FWPTMM3204 Interpret designs to prepare timber roof truss drawings and documents using computers	FPITMM3204A Interpret designs to prepare timber roof truss drawings and documents using computers	Equivalent
FWPTMM3205 Interpret designs to prepare timber floor system drawings and documents using computers	FPITMM3205A Interpret designs to prepare timber floor system drawings and documents using computers	Equivalent
FWPTMM3206 Interpret designs to prepare timber wall frame drawings and documents using computers	FPITMM3206A Interpret designs to prepare timber wall frame drawings and documents using computers	Equivalent
FWPTMM3207 Set up timber floor trusses	FPITMM3207A Set up timber floor trusses	Equivalent
FWPTMM4201 Construct prototypes and samples	FPITMM4201B Construct prototypes and samples	Equivalent
FWPTMM4202 Diagnose and calculate production costs	FPITMM4202B Diagnose and calculate production costs	Equivalent
FWPTMM4203 Install and commission CNC software	FPITMM4203B Install and commission CNC software	Equivalent

FWPTMM4204 Sample and test products to specifications	FPITMM4204B Sample and test products to specifications	Equivalent
FWPTMM4205 Prepare and advise on a broad range of timber roof truss details using computers	FPITMM4205A Prepare and advise on a broad range of timber roof truss details using computers	Equivalent
FWPTMM4206 Prepare and advise on a broad range of timber floor system details using computers	FPITMM4206A Prepare and advise on a broad range of timber floor system details using computers	Equivalent
FWPTMM4207 Prepare and advise on a broad range of timber wall frame details using computers	FPITMM4207A Prepare and advise on a broad range of timber wall frame details using computers	Equivalent
FWPTMM5201 Assess product feasibility of designs	FPITMM5201B Assess product feasibility of designs	Equivalent
FWPTMM5202 Develop, trial and evaluate prototypes	FPITMM5202B Develop, trial and evaluate prototypes	Equivalent
FWPTMM5203 Generate and transfer complex computer-aided drawings and specifications	FPITMM5203B Generate and transfer complex computer-aided drawings and specifications	Equivalent
FWPTMM5204 Manage product design	FPITMM5204B Manage product design	Equivalent
FWPTMM5205 Optimise CNC operations	FPITMM5205B Optimise CNC operations	Equivalent
FWPTMM5206 Plan production	FPITMM5206B Plan production	Equivalent
FWPWPP2201 Cut panels	FPIWPP2201B Cut panels	Equivalent
FWPWPP2202 Surface treat raw board	FPIWPP2202B Surface treat raw board	Equivalent
FWPWPP2203 Repair veneer and ply	FPIWPP2203B Repair veneer and ply	Equivalent
FWPWPP2204 Repair veneer mechanically	FPIWPP2204B Repair veneer mechanically	Equivalent
FWPWPP2205 Prepare chip or fibre blends	FPIWPP2205B Prepare chip or fibre blends	Equivalent
FWPWPP2206 Prepare veneer for ply	FPIWPP2206B Prepare veneer for ply	Equivalent
FWPWPP2207 Scarf edges of veneer	FPIWPP2207B Scarf edges of veneer	Equivalent
FWPWPP2208 Cut veneer	FPIWPP2208B Cut veneer	Equivalent
FWPWPP2209 Saw products from continuous ply	FPIWPP2209B Saw products from continuous ply	Equivalent
FWPWPP2210 Cut panels to profile	FPIWPP2210B Cut panels to profile	Equivalent
FWPWPP2211 Move material by transfer equipment	FPIWPP2211B Move material by transfer equipment	Equivalent
FWPWPP3201 Produce veneer from debarked logs	FPIWPP3201B Produce veneer from debarked logs	Equivalent
FWPWPP3202 Paint panels	FPIWPP3202B Paint panels	Equivalent
FWPWPP3203 Produce fibre from chips	FPIWPP3203B Produce fibre from chips	Equivalent
FWPWPP3204 Form board	FPIWPP3204B Form board	Equivalent
FWPWPP3205 Match and join veneer	FPIWPP3205B Match and join veneer	Equivalent
FWPWPP3206 Laminate and veneer board surfaces	FPIWPP3206B Laminate and veneer board surfaces	Equivalent
FWPWPP3207 Clip veneer	FPIWPP3207B Clip veneer	Equivalent
FWPWPP3208 Punch peg holes in panels	FPIWPP3208B Punch peg holes in panels	Equivalent
FWPWPP3209 Prepare resin and additives	FPIWPP3209B Prepare resin and additives	Equivalent
FWPWPP3210 Laminate board	FPIWPP3210B Laminate board	Equivalent
FWPWPP3211 Maintain caul plates and screens	FPIWPP3211B Maintain caul plates and screens	Equivalent
FWPWPP3212 Dry material	FPIWPP3212B Dry material	Equivalent

FWPWPP3213 Heat treat material	FPIWPP3213B Heat treat material	Equivalent
FWPWPP3214 Treat paper	FPIWPP3214B Treat paper	Equivalent
FWPWPP3215 Cut paper	FPIWPP3215B Cut paper	Equivalent
FWPWPP3216 Press material using the daylight process	FPIWPP3216B Press material using the daylight process	Equivalent
FWPWPP3217 Process production effluent	FPIWPP3217B Process production effluent	Equivalent
FWPWPP3218 Plan and coordinate machining of panels	FPIWPP3218B Plan and coordinate machining of panels	Equivalent
FWPWPP3219 Blend and test binding mixes	FPIWPP3219B Blend and test binding mixes	Equivalent
FWPWPP3220 Plan and coordinate panel painting	FPIWPP3220B Plan and coordinate panel painting	Equivalent
FWPWPP3221 Trim new panels to size	FPIWPP3221B Trim new panels to size	Equivalent
FWPWPP3222 Press laminated ply	FPIWPP3222B Press laminated ply	Equivalent
FWPWPP3223 Immunise veneer	FPIWPP3223B Immunise veneer	Equivalent
FWPWPP3224 Profile sand products	FPIWPP3224B Profile sand products	Equivalent
FWPWPP3225 Produce profile sanding shoes and wheels	FPIWPP3225B Produce profile sanding shoes and wheels	Equivalent
FWPWPP3226 Operate a continuous press	FPIWPP3226B Operate a continuous press	Equivalent
FWPWPP3227 Vacuum paint	FPIWPP3227B Vacuum paint	Equivalent
FWPWPP3228 Dry Wood Flakes	FPIWPP3228B Dry Wood Flakes	Equivalent
FWPWPP3229 Classify flake	FPIWPP3229B Classify flake	Equivalent
FWPWPP3230 Produce decorative veneers	FPIWPP3230B Produce decorative veneers	Equivalent
FWPWPP3231 Produce veneer from prepared flitches	FPIWPP3231B Produce veneer from prepared flitches	Equivalent
FWPWPP4201 Plan and coordinate panel production	FPIWPP4201B Plan and coordinate panel production	Equivalent
FWPWPP4202 Perform laboratory testing	FPIWPP4202B Perform laboratory testing	Equivalent

FWP Release 2.0 Unit code and title	FWP Release 1.0 Unit code and title	Relationship
FWPCOR6201 Manage sustainability in the workplace	FWPCOR6201 Manage sustainability in the workplace	No change
FWPCOR6202 Implement practices to maximise value from wood residues	FWPCOR6202 Implement practices to maximise value from wood residues	No change
FWPCOT4208 Implement workplace sustainability practices	FWPCOT4208 Implement workplace sustainability practices	No change
FWPCOT5201 Implement sustainable forest practices	FWPCOT5201 Implement sustainable forestry practices	No change
FWPCOT5202 Manage forestry information and interpretations programs	FWPCOT5202 Manage forestry information and interpretations programs	No change
FWPCOT5205 Develop biohazard contingency plans	FWPCOT5205 Develop biohazard contingency plans	No change
FWPCOT5206 Implement forestry chain of custody certification system	FWPCOT5206 Implement forestry chain of custody certification system	No change
FWPCOT5207 Implement sustainability in the workplace	FWPCOT5207 Implement sustainability in the workplace	No change
FWPCOT5208 Build and maintain community relationships	FWPCOT5208 Build and maintain community relationships	No change

FWPCOT5209 Manage tree harvesting to minimise environmental impact	FWPCOT5209 Manage tree harvesting to minimise environmental impact	No change
FWPCOT6201 Manage community engagement	FWPCOT6201 Manage community engagement	No change
FWPCOT6202 Develop and manage a forestry chain of custody certification process for the workplace	FWPCOT6202 Develop and manage a forestry chain of custody certification process for the workplace	No change
FWPCOT6203 Develop engineered timber products to meet energy efficient building design needs	FWPCOT6203 Develop engineered timber products to meet energy efficient building design needs	No change
FWPCOT6204 Use carbon accounting to estimate emissions	FWPCOT6204 Use carbon accounting to estimate emissions in the workplace	No change
FWPCOT6205 Prepare an enterprise carbon management report	FWPCOT6205 Prepare an enterprise carbon management report	No change
FWPCOT6207 Develop forest management systems and processes	FWPCOT6207 Develop forest management systems and processes	No change
FWPCOT6208 Manage innovative thinking and practice in the forest and wood products industry	FWPCOT6208 Manage innovative thinking and practice in the forest and wood products industry	No change
FWPCOT6209 Manage forest and wood products industry research	FWPCOT6209 Manage forest and wood products industry research	No change
FWPCOT8101 Lead forest and wood products industry innovative thinking and practice	FWPCOT8101 Lead forest and wood products industry innovative thinking and practice	No change
FWPCOT8102 Initiate and lead a forest and wood products industry innovation	FWPCOT8102 Initiate and lead a forest and wood products industry innovation	No change
FWPFGM5217 Promote plantations as a sustainable form of land use	FWPFGM5217 Promote plantations as a sustainable form of land use	No change
FWPFGM5219 Undertake carbon stock sampling of forests and plantations	FWPFGM5219 Undertake carbon stock sampling of forests and plantations	No change
FWPFGM6201 Plan a bio-char storage system for carbon capture and storage	FWPFGM6201 Plan a bio-char storage system for carbon capture and storage	No change
FWPFGM6203 Manage sustainable tree inventory	FWPFGM6203 Manage sustainable tree inventory	No change

Note: FWP units of competency within the Forest and Wood Products Training Package have no prerequisite units.

Imported units of competency

The following units of competency were imported into the Forest and Wood Products Training Package to provide greater flexibility, choice, and transferability of skills across the industries.

Imported unit code and title	Host package	Release	Change from FPI11
AHCARB204A - Undertake standard climbing techniques	AHC10	1	No change
AHCARB206A - Undertake stump removal	AHC10	1	No change
AHCARB307A - Undertake complex tree climbing	AHC10	1	No change
AHCBUS502A - Market products and services	AHC10	1	No change
AHCCHM201A - Apply chemicals under supervision	AHC10	1	No change
AHCCHM303A - Prepare and apply chemicals	AHC10	1	No change
AHCCHM304A - Transport, handle and store chemicals	AHC10	1	No change
AHCCHM401A - Minimise risks in the use of chemicals	AHC10	1	No change
AHCCHM402A - Plan and implement a chemical use program	AHC10	1	No change
AHCEXP303A - Prepare and use explosives	AHC10	1	No change
AHCFIR201A - Assist with prescribed burning	AHC10	1	No change
AHCILM201A - Maintain cultural places	AHC10	1	No change
AHCILM401A - Protect places of cultural significance	AHC10	1	No change
AHCINF202A - Install, maintain and repair fencing	AHC10	1	No change
AHCINF203A - Maintain properties and structures	AHC10	1	No change
AHCINF303A - Plan and construct conventional fencing	AHC10	1	No change
AHCIRG204A - Lay irrigation and/or drainage pipes	AHC10	1	No change
AHCIRG206A - Maintain pressurised irrigation systems	AHC10	1	No change
AHCIRG301A - Implement a maintenance program for an irrigation system	AHC10	1	No change
AHCIRG306A - Troubleshoot irrigation systems	AHC10	1	No change
AHCIRG406A - Plan on-site irrigation system installation and construction work	AHC10	1	No change
AHCIRG503A - Design irrigation, drainage and water treatment systems	AHC10	1	No change
AHCLSC302A - Construct landscape features using concrete	AHC10	1	No change
AHCLSC304A - Erect timber structures and features	AHC10	1	No change
AHCMOM301A - Coordinate machinery and equipment maintenance and repair	AHC10	1	No change
AHCMOM402A - Supervise maintenance of property machinery and equipment	AHC10	1	No change
AHCNAR303A - Implement revegetation works	AHC10	1	No change
AHCNAR402A - Plan the implementation of revegetation works	AHC10	1	No change
AHCNSY201A - Pot up plants	AHC10	1	No change
AHCNSY202A - Tend nursery plants	AHC10	1	No change
AHCNSY203A - Undertake propagation activities	AHC10	2	No change
AHCNSY301A - Maintain nursery plants	AHC10	1	No change
AHCNSY302A - Receive and dispatch nursery products	AHC10	1	No change
AHCNSY306A - Implement a propagation plan	AHC10	1	No change
AHCNSY401A - Plan a growing-on program	AHC10	1	No change
AHCNSY402A - Plan a propagation program	AHC10	1	No change

AHCPGD402A - Plan a plant establishment program	AHC10	1	No change
AHCPHT503A - Manage a controlled growing environment	AHC10	1	No change
AHCPMG201A - Treat weeds	AHC10	1	No change
AHCPMG202A - Treat plant pests, diseases and disorders	AHC10	1	No change
AHCPMG301A - Control weeds	AHC10	1	No change
AHCPMG302A - Control plant pests, diseases and disorders	AHC10	1	No change
AHCPMG402A - Develop a pest management action plan within a local area	AHC10	1	No change
AHCPMG503A - Develop a strategy for the management of target pests	AHC10	1	No change
AHCSAW201A - Conduct erosion and sediment control activities	AHC10	1	No change
AHCSAW302A - Implement erosion and sediment control measures	AHC10	1	No change
AHCWAT502A - Manage water systems	AHC10	1	No change
AHCWRK201A - Observe and report on weather	AHC10	1	No change
AHCWRK203A - Operate in isolated and remote situations	AHC10	1	No change
AHCWRK302A - Monitor weather conditions	AHC10	1	No change
AHCWRK304A - Respond to rescue incidents	AHC10	1	No change
AHCWRK505A - Manage trial and/or research material	AHC10	1	No change
AURTGA3001 - Drive and manoeuvre trailers	AUR12	1	No change
BSBADM311 - Maintain business resources	BSB	1.0	Supersedes BSBADM311A - Maintain business resources
BSBAUD501 - Initiate a quality audit	BSB	1.0	Supersedes BSBAUD501B - Initiate a quality audit
BSBCMM301 - Process customer complaints	BSB	1.0	Supersedes BSBCMM301B - Process customer complaints
BSBCMM401 - Make a presentation	BSB	1.0	Supersedes BSBCMM401A - Make a presentation
BSBCMM402 - Implement effective communication strategies	BSB	1.0	Supersedes BSBCMM402A - Implement effective communication strategies
BSBCRT402 - Collaborate in a creative process	BSB	1.0	Supersedes BSBCRT402A - Collaborate in a creative process
BSBCUE301 – Use multiple information systems	BSB	1.0	No change
BSBCUE305 – Process credit applications	BSB	1.0	No change
BSBCUE306 – Process complex accounts	BSB	1.0	No change
BSBCUS301 - Deliver and monitor a service to customers	BSB	1.0	Supersedes BSBCUS301B - Deliver and monitor a service to customers
BSBCUS401 - Coordinate implementation of customer service strategies	BSB	1.0	Supersedes BSBCUS401B - Coordinate implementation of customer service strategies
BSBCUS402 - Address customer needs	BSB	1.0	Supersedes BSBCUS402B - Address customer needs
BSBCUS501 - Manage quality customer service	BSB	1.0	Supersedes BSBCUS501C - Manage quality customer service

BSBFIA301 - Maintain financial records	BSB	1.0	Supersedes BSBFIA301A - Maintain financial records
BSBFIM501 - Manage budgets and financial plans	BSB	1.0	Supersedes BSBFIM501A - Manage budgets and financial plans
BSBFLM303 - Contribute to effective workplace relationships	BSB	1.0	Supersedes BSBFLM303C - Contribute to effective workplace relationships
BSBFLM305 - Support operational plan	BSB	1.0	Supersedes BSBFLM305C - Support operational plan
BSBFLM312 - Contribute to team effectiveness	BSB	1.0	Supersedes BSBFLM312C - Contribute to team effectiveness
BSBINM201 - Process and maintain workplace information	BSB	1.0	Supersedes BSBINM201A - Process and maintain workplace information
BSBINM301 - Organise workplace information	BSB	1.0	Supersedes BSBINM301A - Organise workplace information
BSBINM401 - Implement workplace information system	BSB	1.0	Supersedes BSBINM401A - IMPLEMENT WORKPLACE INFORMATION SYSTEM
BSBINM501 - Manage an information or knowledge management system	BSB	1.0	Supersedes BSBINM501A - Manage an information or knowledge management system
BSBINN201 - Contribute to workplace innovation	BSB	1.0	Supersedes BSBINN201A - Contribute to workplace innovation
BSBINN501 - Establish systems that support innovation	BSB	1.0	Supersedes BSBINN501A - Establish systems that support innovation
BSBINN502 - Build and sustain an innovative work environment	BSB	1.0	Supersedes BSBINN502A - Build and sustain an innovative work environment
BSBINN601 - Lead and manage organisational change	BSB	1.0	Supersedes BSBINN601B - Manage organisational change
BSBINN801 - Lead innovative thinking and practice	BSB	1.0	Supersedes BSBINN801A - Lead innovative thinking and practice
BSBITS401 - Maintain business technology	BSB	1.1	Supersedes BSBITS401B - Maintain business technology
BSBITU201 - Produce simple word processed documents	BSB	1.0	Supersedes BSBITU201A - Produce simple word processed documents
BSBITU306 - Design and produce business documents	BSB	1.0	Supersedes BSBITU306A - Design and produce business documents
BSBLDR402 - Lead effective workplace relationships	BSB	1.0	Supersedes BSBWOR401A - Establish effective workplace relationships

BSBLDR403 - Lead team effectiveness	BSB	1.0	Supersedes BSBWOR402A - Promote team effectiveness
BSBLDR803 – Develop and cultivate collaborative partnerships and relationships	BSB	1.0	No change
BSBLED401 - Develop teams and individuals	BSB	1.0	Supersedes BSBLED401A - Develop teams and individuals
BSBLED501 - Develop a workplace learning environment	BSB	1.0	Supersedes BSBLED501A - Develop a workplace learning environment
BSBMGT402 - Implement operational plan	BSB	1.0	Supersedes BSBMGT402A - Implement operational plan
BSBMGT403 - Implement continuous improvement	BSB	1.0	Supersedes BSBMGT403A - Implement continuous improvement
BSBMGT502 - Manage people performance	BSB	1.0	Supersedes BSBMGT502B - Manage people performance
BSBMGT516 - Facilitate continuous improvement	BSB	1.0	Supersedes BSBMGT516C - Facilitate continuous improvement
BSBMGT517 - Manage operational plan	BSB	1.0	Supersedes BSBMGT515A - Manage operational plan
BSBMGT608 - Manage innovation and continuous improvement	BSB	1.0	Supersedes BSBMGT608C - Manage innovation and continuous improvement
BSBMGT616 - Develop and implement strategic plans	BSB	1.0	Supersedes BSBMGT616A - Develop and implement strategic plans
BSBMKG501 - Identify and evaluate marketing opportunities	BSB	1.0	Supersedes BSBMKG501B - Identify and evaluate marketing opportunities
BSBPMG414 - Apply project information management and communications techniques	BSB	1.0	Supersedes BSBPMG414A - Apply project information management and communications techniques
BSBPMG415 - Apply project risk management techniques	BSB	1.0	Supersedes BSBPMG415A - Apply project risk-management techniques
BSBPMG416 - Apply project procurement procedures	BSB	1.0	Supersedes BSBPMG416A - Apply project procurement procedures
BSBPMG522 - Undertake project work	BSB	1.0	Supersedes BSBPMG522A - Undertake project work
BSBPMG522 - Undertake project work	BSB	1.1 OR 2.0	Supersedes BSBREL701A - Develop and cultivate collaborative partnerships and relationships
BSBRES401 - Analyse and present research information	BSB	1.0	Supersedes BSBRES401A - Analyse and present research information
BSBRES801 - Initiate and lead applied research	BSB	1.0	Supersedes BSBRES801A - Initiate and lead applied research

BSBRK401 - Identify risk and apply risk management processes	BSB	1.0	Supersedes BSBRK401A - Identify risk and apply risk management processes
BSBRK501 - Manage risk	BSB	1.0	Supersedes BSBRK501B - Manage risk
BSBSMB404 - Undertake small business planning	BSB	1.0	Supersedes BSBSMB404A - Undertake small business planning
BSBSMB406 - Manage small business finances	BSB	1.0	Supersedes BSBSMB406A - Manage small business finances
BSBSUS501 - Develop workplace policy and procedures for sustainability	BSB	1.0	Supersedes BSBSUS501A - Develop workplace policy and procedures for sustainability
BSBWHS503 - Contribute to the systematic management of WHS risk	BSB	1.0	Supersedes BSBWHS503A - Contribute to the systematic management of WHS risk
BSBWOR204 - Use business technology	BSB	1.0	Supersedes BSBWOR204A - Use business technology
BSBWOR301 - Organise personal work priorities and development	BSB	1.0	Supersedes BSBWOR301B - Organise personal work priorities and development
BSBWOR501 - Manage personal work priorities and professional development	BSB	1.0	Supersedes BSBWOR501B - Manage personal work priorities and professional development
BSBWOR502 - Lead and manage team effectiveness	BSB	1.0	Supersedes BSBWOR502B - Ensure team effectiveness
BSBWRK506A - Coordinate research and analysis	BSB07	1	No change
BSBWRT401 - Write complex documents	BSB	1.0	Supersedes BSBWRT401A - Write complex documents
CHCPOL403C - Undertake research activities	CHC08	1	No change
CPCBC4001A - Apply building codes and standards to the construction process for low rise building projects	CPC08	1	No change
CPCBC4004A - Identify and produce estimated costs for building and construction projects	CPC08	1	No change
CPCBC4005A - Produce labour and material schedules for ordering	CPC08	1	No change
CPCBC4014A - Prepare simple building sketches and drawings	CPC08	1	No change
CPCBC4024A - Resolve business disputes	CPC08	1	No change
CPCCA2011A – Handle carpentry materials	CPC08	9.1	No change
CPCCA3006B - Erect roof trusses	CPC08	1	No change
CPCCM1015A - Carry out measurements and calculations	CPC08	1	No change
CPCCLDG3001A - Licence to perform dogging	CPC08	1	No change
CPCOHS2001A - Apply OHS requirements, policies and procedures in the construction industry	CPC08	1	No change
CPCSV5010A - Interact with clients in a regulated environment	CPC08	1	No change
CPCSV5011A - Apply building codes and standards to residential buildings	CPC08	1	No change

CPCCSV5012A - Assess timber-framed designs for one and two storey buildings	CPC08	1	No change
CPCCSV5015A - Assess structural requirements for domestic scale buildings	CPC08	1	No change
CPCSUS4001A - Implement and monitor environmentally sustainable work practices	CPC08	1	No change
CPPSEC1002 – Apply retail security procedures	CPP07	7	No change
CPPSEC3007A - Maintain security of environment	CPP07	1	No change
CUVDES405A - Research and apply techniques in spatial design	CUV11	1	No change
HLTAID003 - Provide first aid	HLT07	4.0	Supersedes HLTFA301C - Apply first aid
HLTAID003 - Provide first aid	HLT	5	No change
HLTAID005 - Provide first aid in remote situations	HLT	4	No change
HLTAID006 - Provide advanced first aid	HLT	4	No change
HLTAID008 - Manage first aid services and resources	HLT	2	No change
ICTICT308 - Use advanced features of computer applications	ICT	1.0	Supersedes ICAICT308A - Use advanced features of computer applications
ICTSUS804 - Use ICT to improve sustainability outcomes	ICT	1.0	Supersedes ICTSUS7235A - Use ICT to improve sustainability outcomes
LGACOM401A - Administer contracts	LGA04	2	No change
LGACOM409A - Prepare tender documentation	LGA04	2	No change
LGACOM502B - Devise and conduct community consultations	LGA04	2	No change
LGAEHRR504C - Implement public environmental health education programs	LGA04	2	No change
LGAPLEM404A - Prepare and present geographic information systems data	LGA04	2	No change
LGAPLEM612B - Protect heritage and cultural assets	LGA04	2	No change
LGAWORK212A - Perform field support duties in a roadwork environment	LGA04	2	No change
MEM05004C - Perform routine oxy acetylene welding	MEM05	1	No change
MEM05006C - Perform brazing and or silver soldering	MEM05	1	No change
MEM05049B - Perform routine gas tungsten arc welding	MEM05	1	No change
MEM05050B - Perform routine gas metal arc welding	MEM05	1	No change
MEM18001C - Use hand tools	MEM05	1	No change
MEM18011C - Shut down and isolate machines/equipment	MEM05	2	No change
MSACMT671A - Develop and manage sustainable environmental practices	MSA07	1	No change
MSAPMOPS404A - Co-ordinate maintenance	MSA07	1	No change
MSAPMSUP390A - Use structured problem solving tools	MSA07	1	No change
MSFGG2008 - Glaze and re-glaze residential windows and doors	MSF	1	No change
MSS015002A - Develop strategies for more sustainable use of resources	MSS11	1	No change
MSS015003A - Analyse product life cycle for sustainability	MSS11	1	No change
MSS015011A - Conduct a sustainability energy audit	MSS11	1	No change

MSS402001A - Apply competitive systems and practices	MSS11	1	No change
MSS402030A - Apply cost factors to work practices	MSS11	1	No change
MSS402050A - Monitor process capability	MSS11	1	No change
MSS402051A - Apply quality standards	MSS11	1	No change
MSS402060A - Use planning software systems in operations	MSS11	1	No change
MSS403001A - Implement competitive systems and practices	MSS11	1	No change
MSS403010A - Facilitate change in an organisation implementing competitive systems and practices	MSS11	1	No change
MSS403032A - Analyse manual handling processes	MSS11	1	No change
MSS403051A - Mistake proof an operational process	MSS11	1	No change
MSS404050A - Undertake process capability improvements	MSS11	1	No change
MSS404052A - Apply statistics to operational processes	MSS11	1	No change
MSS404060A - Facilitate the use of planning software systems in a work area or team	MSS11	1	No change
MSS404082A - Assist in implementing a proactive maintenance strategy	MSS11	1	No change
MSS405001A - Develop competitive systems and practices for an organisation	MSS11	1	No change
MSS405004A - Develop business plans in an organisation implementing competitive systems and practices	MSS11	1	No change
MSS405030A - Optimise cost of a product or service	MSS	2.0 - 3.0	Supersedes MSACMT630A - Optimise cost of product
MSS405031A - Undertake value analysis of product or process costs in terms of customer requirements	MSS	3.0	Supersedes MSACMT631A - Undertake value analysis of product costs in terms of customer requirements
MSS405062A - Develop a documentation control strategy for an organisation	MSS11	1	No change
MSS405070A - Develop and manage sustainable energy practices	MSS11	1	No change
MSS405075A - Facilitate the development of a new product	MSS11	2	No change
PSPGOV521A - Collect statistical data	PSP04	3	No change
PSPPOL603A - Manage policy implementation	PSP04	3	No change
PSPREG603A - Manage and lead inspection and monitoring programs	PSP04	3	No change
PUACOM012B - Liaise with media at a local level	PUA00	3	No change
PUAEQU001B - Prepare, maintain and test response equipment Prerequisite path PUAFIR215 Prevent injury (Fire sector specific)	PUA00	3	No change
PUAFIR203B - Respond to urban fire Prerequisite path PUAFIR207B Operate breathing apparatus open circuit	PUA00	2	No change
PUAFIR204B - Respond to wildfire Prerequisite path PUAFIR215 Prevent injury	PUA00	2	No change
PUAFIR205B - Respond to aviation incident (specialist)	PUA00	2	No change

<p style="text-align: center;">Prerequisite path PUAFIR203B Respond to urban fire</p>			
PUAFIR209B - Work safely around aircraft	PUA00	3	No change
PUAFIR215 - Prevent injury	PUA12	2	No change
<p>PUAFIR303B - Suppress wildfire</p> <p style="text-align: center;">Prerequisite path PUAFIR204B Respond to wildfire</p>	PUA00	2	No change
<p>PUAFIR309B - Operate pumps</p> <p style="text-align: center;">Prerequisite path PUAEQU001B Prepare, maintain and test response equipment And one of the following four units: PUAFIR203B Respond to urban fire OR PUAFIR218 Respond to isolated structure fire OR PUAFIR204B Respond to wildfire OR PUAFIR205B Respond to aviation incident (specialist)</p>	PUA00	2	No change
<p>PUAFIR412 - Conduct simple prescribed burns</p> <p style="text-align: center;">Prerequisite path PUAFIR303B Suppress wildfire</p>	PUA12	2	No change
<p>PUAFIR413 - Develop simple prescribed burn plans</p> <p style="text-align: center;">Prerequisite path PUAFIR303B Suppress wildfire</p>	PUA12	2	No change
<p>PUAFIR501B - Conduct fire investigation and analysis activities</p> <p style="text-align: center;">Prerequisite path PUALAW001B Protect and preserve incident scene</p>	PUA12	3	No change
PUAFIR509B - Implement prevention strategies	PUA12	3	No change
<p>PUAFIR511 - Conduct complex prescribed burns</p> <p style="text-align: center;">Prerequisite path PUAFIR303B Suppress wildfire</p>	PUA12	2	No change
<p>PUAFIR513 - Develop complex prescribed burn plans</p> <p style="text-align: center;">Prerequisite path PUAFIR303B Suppress wildfire</p>	PUA12	2	No change
PUALAW001B - Protect and preserve incident scene	PUA00	2	No change
PUALAW002B - Conduct initial investigation at incident scene	PUA00	2	No change
<p>PUAOHS002B - Maintain safety at an incident scene</p> <p style="text-align: center;">Prerequisite path PUAFIR215 Prevent Injury (Fire sector specific)</p>	PUA00	3	No change
<p>PUAOPE001B - Supervise response</p> <p style="text-align: center;">Prerequisite path PUAFIR302B Suppress urban fire OR PUAFIR303B Suppress wildfire (Fire specific)</p>	PUA00	1	No change
PUAOPE002B - Operate communications systems and equipment	PUA00	1	No change
<p>PUAOPE005B - Manage a multi team response</p> <p style="text-align: center;">Prerequisite path PUAOPE001B Supervise response (Fire specific)</p>	PUA00	1	No change
<p>PUAOPE007B - Command agency personnel within a multi-agency emergency response</p> <p style="text-align: center;">Prerequisite path PUAOPE021A Control a Level 1 incident PUAOPE015A Conduct briefings and debriefings (Fire sector specific)</p>	PUA00	3	No change

PUATEA001B - Work in a team	PUA00	2	No change
PUATEA002B - Work autonomously Prerequisite path PUATEA001B Work in a team (Fire sector specific)	PUA00	3	No change
RIIHAN308D - Load and unload plant	RII	1.4	Supersedes RIIHAN308A - Load and unload plant
RIIMPO315D - Conduct tractor operations	RII	1.4	Supersedes RIIMPO315A - Conduct tractor operations
RIIMPO317D - Conduct roller operations	RII	1.4	Supersedes RIIMPO317A - Conduct roller operations
RIIMPO318D - Conduct civil construction skid steer loader operations	RII	1.4	Supersedes RIIMPO318B - Conduct civil construction skid steer loader operations
RIIMPO319D - Conduct backhoe/loader operations	RII	1.4	Supersedes RIIMPO319A - Conduct backhoe/loader operations
RIIMPO320D - Conduct civil construction excavator operations	RII	1.4	Supersedes RIIMPO320B - Conduct civil construction excavator operations
RIIMPO321D - Conduct civil construction wheeled front end loader operations	RII	1.4	Supersedes RIIMPO321B - Conduct civil construction wheeled front end loader operations
RIIMPO322D - Conduct civil construction tracked front end loader operations	RII	1.4	Supersedes RIIMPO322A - Conduct civil construction tracked front end loader operations
RIIMPO323D - Conduct civil construction dozer operations	RII	1.4	Supersedes RIIMPO323A - Conduct civil construction dozer operations
RIIMPO324D - Conduct civil construction grader operations	RII	1.4	Supersedes RIIMPO324A - Conduct civil construction grader operations
RIIVEH304D - Conduct tip truck operations	RII	1.4	Supersedes RIIVEH304B - Conduct tip truck operations
RIIWH3205D - Control traffic with stop-slow bat	RII	1.4	Supersedes RIIOHS205A - Control traffic with stop-slow bat
SIRRRPK010A - Recommend home and home improvement products and services	SIR07	2	No change
SIRRRPK214 - Recommend specialised products and services	SIR07	1	No change
SIRWINV302 – Monitor inventory capacity to meet demand	SIR07	3.0	No change
SIRWLS301 – Build sales relationships	SIR07	3.0	No change
SIRXADM001A - Apply retail office procedures	SIR07	2	No change
SIRXCCS201 - Apply point-of-sale handling procedures	SIR07	1	No change
SIRXCCS202 - Interact with customers	SIR07	1	No change
SIRXFIN002A - Perform retail finance duties	SIR07	2	No change
SIRXFIN003A - Produce financial reports	SIR07	2	No change
SIRXFIN004A - Manage financial resources	SIR07	2	No change
SIRXFIN201 - Balance and secure point-of-sale terminal	SIR07	1	No change
SIRXICT001A - Operate retail technology	SIR07	2	No change

SIRXICT303 - Operate retail information technology systems	SIR07	1	No change
SIRXINV001A - Perform stock control procedures	SIR07	2	No change
SIRXINV002A - Maintain and order stock	SIR07	2	No change
SIRXINV004A - Buy merchandise	SIR07	1	No change
SIRXMER004A - Manage merchandise and store presentation	SIR07	1	No change
SIRXMER201 - Merchandise products	SIR07	1	No change
SIRXMER202 - Plan, create and maintain displays	SIR07	1	No change
SIRXMER303 - Coordinate merchandise presentation	SIR07	1	No change
SIRXMER406 - Monitor in-store visual merchandising display	SIR07	1	No change
SIRXQUA001A - Develop innovative ideas at work	SIR07	2	No change
SIRXRSK001A - Minimise theft	SIR07	1	No change
SIRXRSK002A - Maintain store security	SIR07	2	No change
SIRXRSK003A - Apply store security systems and procedures	SIR07	2	No change
SIRXSL002A - Advise on products and services	SIR07	2	No change
SIRXSL0201 - Sell products and services	SIR07	1	No change
SIRXSL0303 - Build relationships with customers	SIR07	1	No change
SIRXSL0304 - Coordinate sales performance	SIR07	1	No change
SIRXSL0406 - Manage sales and service delivery	SIR07	1	No change
SIRXWHS302 - Maintain store safety	SIR07	1	No change
SITPPD402 - Develop interpretive activities	SIT12	1	No change
TAEASS401B - Plan assessment activities and processes	TAE10	1	No change
TAEASS402B - Assess competence	TAE10	1	No change
TAEASS403B - Participate in assessment validation	TAE10	1	No change
TAEDEL301A - Provide work skill instruction	TAE10	1	No change
TAEDEL401A - Plan, organise and deliver group-based learning	TAE10	1	No change
TAEDEL402A - Plan, organise and facilitate learning in the workplace	TAE10	1	No change
TAEDES401A - Design and develop learning programs	TAE10	1	No change
TAEDES402A - Use training packages and accredited courses to meet client needs	TAE10	1	No change
TLIA2012 - Pick and process orders	TLI	1	Supersedes TLIA2012A Pick and process orders
TLIA3015A – Complete receipt/despatch documentation	TLI10	1.0	No change
TLIA3016A – Use inventory systems to organise stock control	TLI10	1.0	No change
TLIA3018A - Organise despatch operations	TLI10	1	No change
TLIA3038A – Control and order stock	TLI10	1.0	No change
TLIC2002A - Drive light rigid vehicle	TLI10	1	No change
TLIC3003 - Drive medium rigid vehicle	TLI	1	Supersedes TLIC3003A Drive medium rigid vehicle
TLIC3004A - Drive heavy rigid vehicle	TLI10	1	No change
TLIC3005A - Drive heavy combination vehicle	TLI10	1	No change
TLIC3063A - Operate vehicle carrying special loads	TLI10	1	No change
TLIC4006A - Drive multi-combination vehicle	TLI10	1	No change

TLID1001 - Shift materials safely using manual handling methods	TLI	1	Supersedes TLID1001A Shift materials safely using manual handling methods
TLID2004A - Load and unload goods/cargo	TLI10	1	No change
TLID2010 - Operate a forklift	TLI	1	Supersedes TLID2010A Operate a forklift
TLID2012A - Operate specialised load shifting equipment	TLI10	1	No change
TLID2013A - Move materials mechanically using automated equipment	TLI10	1	No change
TLID2047A - Prepare cargo for transfer with slings	TLI10	1	No change
TLID3011A - Conduct specialised forklift operations	TLI10	1	No change
TLID3014A - Load and unload vehicles carrying special loads	TLI10	1	No change
TLID3033 - Operate a vehicle-mounted loading crane	TLI	1	Supersedes TLID3033A Operate a vehicle-mounted loading crane
TLID3035A - Operate a boom type elevating work platform	TLI10	1	No change
TLID3036A - Lift and move load using a mobile crane	TLI10	1	No change
TLID3043A - Shift loads using gantry equipment	TLI10	1	No change
TLID4032A - Plan and conduct specialised lift	TLI10	1	No change
TLIE3002 - Estimate/calculate mass, area and quantify dimensions	TLI	1	Supersedes TLIE3002A - Estimate/calculate mass, area and quantify dimensions
TLIE4006 - Collect, analyse and present workplace data and information	TLI	1	Supersedes TLIE4006A - Collect, analyse and present workplace data and information
TLIF1002 - Conduct housekeeping activities	TLI	1	Supersedes TLIF1002B - Conduct housekeeping activities
TLIF2010 - Apply fatigue management strategies	TLI	1	Supersedes TLIF2010A - Apply fatigue management strategies
TLIF4007 - Implement and coordinate accident-emergency procedures	TLI	1	Supersedes TLIF4007A - Implement and coordinate accident-emergency procedures
TLIH2001A - Interpret road maps and navigate pre-determined routes	TLI10	1	No change
TLILIC2001A - Licence to operate a forklift truck	TLI10	1	No change
TLILIC2002A – Licence to operate an order picking forklift truck	TLI10	1.0	No change
TLILIC2016B - Licence to drive a heavy rigid vehicle	TLI10	1	No change
TLILIC3017B - Licence to drive a heavy combination vehicle	TLI10	1	No change
TLILIC3018B - Licence to drive a multi combination vehicle	TLI10	1	No change
TLIR4002 - Source goods/services and evaluate contractors	TLI	1	Supersedes TLIR4002A - Source goods/services and evaluate contractors

Key work and training requirements in the industry

About the industry

The forest and wood products industry is critical to Australia's future economy based on sustainable products and clean energy. It is the only industry with a carbon neutral footprint, generating durable carbon storage through forest growing and management activities and wood and timber manufactured products with low embodied energy.

The industry's value chain includes the management of all forests, forest reserves and parks through conservation and land management, the forest growing and management activities for timber production, the manufacturing of a diverse range of traditional and non-traditional wood-based products, and the distribution channels to deliver and sell these products. The distribution is achieved through retail and trade merchants on one side and wholesalers, manufacturers, importers and exporters on the other side.

The industry supplies a diverse range of products including:

- Timber and timber elements for building construction
- Structural timber systems, including manufactured frames and trusses and laminated veneer lumber. There is also potential in the future for manufacturing cross laminated timber, parallel strand lumber and laminated strand lumber.
- Engineered wood products (panels)
- Indoor and outdoor wooden furniture
- Wood chips
- Pulp and paper and packaging products
- Bio-fuels and bio-energy

Based on a range of superior characteristics, including low embodied energy, low Greenhouse gas (GHG) emissions over the life cycle, time and weight efficiency when used in construction, and good strength and thermal insulation properties, the timber products have clear advantages over, and can substitute, emission-intensive building materials such as steel and aluminium.

The future holds potential for many innovative uses of wood fibre in bio-refineries to generate wood-based compounds and composites from the manufacturing of cellulose fibre, nano-crystalline cellulose, and carbon fibres from the manufacturing of lignin. These innovations can replace petroleum-based compounds in a variety of materials, processes and industries related to automotive and aerospace domains, electronics and consumer products, or medical products and devices, and reduce the use of fossil fuel sources such as oil and gas.

Key work and training requirements

Working safely

Workplace Health and Safety (WHS) is a major point of focus across all sectors and job levels within the industry. It is an integral part of every work activity and is central to nearly every training activity that occurs. Some activities, such as log truck driving, plant and equipment operation are subject to high-risk licensing and certification. Other activities may be subject to regulatory guidelines and codes of practice.

Production workers, operators and technicians are trained to follow and apply procedures and work practices covering a wide range of safety matters including equipment operation and isolation; emergency and evacuation procedures, use of safety equipment, first aid and firefighting equipment; wearing of personal protective equipment and clothing; hazard identification, risk

control and mitigation, handling and elimination of hazardous materials and substances; manual handling including shifting, lifting and carrying; fatigue management and safe forest practices including required actions relating to forest fire. These safety matters feature extensively in the delivery and assessment of skills from Certificate 1 to Certificate IV.

Units and qualifications from Certificate IV through to Advanced Diploma focus on the supervision, management and control of Workplace Health and Safety (WHS). Supervisors and managers need to be well versed in a wide range of legislative, regulatory and licensing requirements, particularly in relation to WHS. Timber growing, harvesting and haulage contracting, sawmill operations and timber products production all contain high-risk activities that must be carefully monitored and controlled.

Owners and managers are responsible for ensuring workers are aware of their WHS rights and obligations; that safe work procedures are developed, implemented and followed; that equipment is safe to use and that the work environment is safe. Managers, supervisors and WHS representatives require significant and ongoing training in carrying out risk assessments and, in the case of an incident, investigation, injury management and rehabilitation procedures. To minimise the risk of incidents, emphasis is placed on practical training such as site inductions, manual handling, hazard identification, Personal Protective Equipment (PPE) use, emergency and first aid procedures and equipment use. Fatigue and heat stress management is now recognised as a key safety imperative. Managers and supervisors are responsible for ensuring employees can recognise the causes and signs of fatigue and can take action to minimise its effects.

Forest operations and the production of wood products require the use of vehicles, heavy machinery and other equipment. Trees and logs can weigh many tonnes, and there is inherent risk in felling, handling and haulage activities. Safety training for haulage focusses on loading, unloading, load restraint and safe transport.

ForestWorks has developed several resources to support safe forestry operations, including a Log Haulage Manual, Tree Faller's Manual, Chainsaw Operators Manual and interactive online resources to support leadership and management in forest industry sustainability.

Working innovatively

When organisations and workers learn new and improved ways of working, there is a direct and positive impact on productivity and competitiveness. To achieve a culture of collaboration and innovation, the process needs to be driven by organisation leaders and managers.

Innovative coordination of planned harvesting with production schedules along the supply chain can produce significant efficiencies and cost savings. For example, the product range, timing and volume of value-adding processing can be significantly affected by elements of the tree harvesting plan, including available timber, equipment and resource requirements, environmental and seasonal weather factors, site preparation and landscape/habitat protection factors, labour and skill supply, and a plethora of operational issues.

Effective and efficient supply chain management by managers within and between enterprises will result from close collaboration around creative problem solving and idea generation. Improving productivity requires the opportunity to learn from expert insights and from those who have already been successful. It involves working together, participating in training and developing practical solutions to existing challenges.

Units of competency have been incorporated into innovation Skill Sets and the Advanced Diploma of Forest Industry Sustainability. The Skill Sets have been designed to support leaders, managers and workers in the forest and wood products industry to improve innovative thinking, practice and development.

Working sustainably

Sustainability is a far-reaching concept that relates to numerous environmental, economic and social aspects of forestry operations.

Strategies and initiatives that support sustainable work practices need to be championed and driven by management.

First, management is responsible for ensuring that all production workers, operators and technicians work according to legislation, regulations, industry standards, organisational policies, procedures and practices, operational controls and monitoring and measurement programs that minimise our environmental footprint.

As a package, these measures and practices are designed to support the sustainability of any organisation. Promotion and communication of legal and regulatory obligations, as well as sustainable work practices, should be undertaken also beyond the organisation boundaries, to reach local businesses and communities.

Second, all managers along the value chain are required to develop and implement practical initiatives for reducing, recycling or eliminating waste and chemicals, and for conserving energy, water and material use.

Examples of factors that impact on forest businesses' sustainability, and sustainable industry practices:

- Fungal, viral bacterial, insect and vertebrate biohazards are of particular threat to long term sustainability. The potential economic damage of a biohazard infestation may include the loss of forest value, current and future markets and damage to trading status. Sustainable forestry practices include the management of fire, weeds, soils and culturally significant landscapes, irrigation and watering strategies, and protection of native flora and fauna. Forestry technicians and managers need to carry out risk assessments of the social, economic and environmental impacts of potential infestations as well as planning the use of infestation treatments and control methods such eradication, quarantine, fumigation, use of pesticides, biological controls and culling of infected plants.
- Ground growth canopy, general forest lean, wind speed and direction, fallen trees, density of trees, ground slope, soil and water protection, ground hazards and obstacles, contingencies for modifying operations during wet or other adverse weather conditions are also factors which all forestry activities, from planting and forest management through to harvesting and sawmilling, need to account for and consider when developing sustainable operations.

Key training for workers focusses on environmental care and protection measures; impact minimisation strategies; environmental hazard identification, including threats to native vegetation, flora and fauna; land use and management; protection of heritage and archaeological artefacts, and rehabilitation strategies and activities.

In downstream processing sectors, such as sawmilling, and manufacture of timber and wood panel products, key training requirements for sustainability focus on housekeeping, resource optimisation, and applying waste disposal, recycling and re-use guidelines.

National forestry standards, i.e. Australian Forestry Standard Ltd (AFS) and Australian Forest Stewardship Council Standard (FSC) (to be released soon), and the international Programme for the Endorsement of Forest Certification (PEFC) recognise sustainability in the industry through certification. Certification gives customers confidence that the products they buy are based on sustainable forestry operations and good management practices. For certification, audit and quality purposes, management needs to implement a chain of custody certification system, including a

register of documents that can include timber source information, processing records, quality records, and details for numbering/labelling systems. Worker training focusses on applying practices and procedures that comply with certification, while supervisors and managers need training to ensure that policies meet the needs of the organisation and are correctly implemented.

Working with the community

The ability to engage and work with local community groups is essential to the success of a project or business. In fact, “people” represent a key pillar for long-term sustainable operations. Community groups are represented by a diverse range of stakeholders, across a range of ages, cultures, religions, education levels and politics. Promotion programs can help achieve community buy-in by communicating the benefit of tree plantations as alternative land use and the use of timber products as an environmentally friendly alternative. Community engagement provides information on a range of matters relating to plantation management, including the benefits and opportunities for the local community. This engagement is through community events, media and promotional activities, and through community participation. Genuine engagement strategies are all about building relationships, to establish trust.

Other key work requirements include the ability to connect with numerous individuals and organisations in the supply chain, work in regional areas, and to have practical knowledge of the forest and wood products industry.

Regulatory and organisational requirements

Aside from a strong focus on skills development for safety and sustainability, delivery and assessment from Certificate 1 to IV centres on familiarisation with a wide range of topics that govern how work is performed. Key training needs include regulatory requirements around award and enterprise agreements, industrial relations, Australian Standards, confidentiality and privacy, equal opportunity, anti-discrimination, relevant industry codes of practice, duty of care, heritage and traditional land owner issues.

All job roles require work to be performed according to organisational requirements and these are reflected in the FWP units and qualifications. They include requirements for recording and reporting, quality and continuous improvement, equipment use and maintenance, environmental management, organisational procedures and site guidelines, operating procedures and ethical conduct.

Supervisors and managers need skills to develop implement, monitor and evaluate organisation policies and procedures, and these skill requirements are reflected in Certificates IV through to Advanced Diploma level.

Communication

Effective interpersonal and communication skills are essential to every job role and therefore a key training requirement for industry. They relate to many aspects of work including orientation to the organisation, performing operational processes, following procedures and instructions, interacting with workers and supervisors, quality assurance and troubleshooting, WHS, dealing with customers, taking part in meetings, undertaking training and training others on the job.

Employees at all levels need to communicate effectively with a range of individuals and groups including clients, contractors, land owners, builders, supervisors and managers, production and technical staff, designers, building certifiers and software providers

Core interpersonal skills include verbal and non-verbal language, hand or other agreed signals, eye contact, active listening, questioning and use of electronic communication devices, such as two-way radios.

Key training for operators and support staff relates to reading and interpreting routine information, including procedures and work instructions, manuals, checklists, plans and diagrams, sketches and illustrations, signage and maps, and safety data sheets. Supervisors, managers and specialist technical staff need advanced skills to critically read, analyse and evaluate text.

Writing skills for operators and technicians including recording production and quality information on proformas, reporting faults and downtime. Higher level written skills are needed by supervisors, managers and specialist technical staff, who are required to produce reports and a range of complex information for a variety of recipients.

Technical product knowledge

A key training need for operators and technical staff relates to the identification of timber qualities, to ensure products meet required quality specifications. Skills include assessing timber characteristics and grades such as colour, density, texture and grain, as well as identification of damage and defects to timber including contamination, insect attack, surface finish, colour, loose surfaces, bubbles, holes, warp, wane, cupping, shakes, insect defects, knots, resin pockets, breakages and machine-caused defects.

Other factors impacting on training delivery and assessment

Regional training delivery

Forestry work is often based in specific geographic regions, such as the Green Triangle region of Victoria and South Australia, areas of Tasmania, the South West of Western Australia, far North Queensland and forest and plantations throughout New South Wales. Mills are often located close to the wood source to minimise costs and aid in production. The majority of training is undertaken by existing workers and is hands-on, utilising on-site materials, such as trees, logs and sawn timber, as well as resources, such as products, machines and human resources. Training therefore needs to occur on site, or at facilities convenient to the workplace. The high investment cost of machinery and equipment also means that, to be economically viable, some training needs to be workplace based.

Just in time

Whilst training is often spread thinly across states and regions, there is a consistent demand for skilled personnel, from operators through to senior management. Demand occurs at all times of the year, so it is important that training takes place not only where it is needed, but when it is needed. Public and private training providers often work with small groups of learners to fulfil a particular demand, such as chainsaw operation, sawdoctoring, or harvesting machinery operation.

Regulation and licensing implications for implementation

In some states, regulations require licences for a range of operations. Licensing provides consistent standards for individuals operating in high risk activities, such as bulldozers and excavators, skid steer loaders, mobile chippers and splitters, and a range of trucks and vehicles.

Employers and managers are legally required to ensure personal safety of all workers. Evidence that a person has the appropriate training to perform a particular skill or activity is usually achieved through some type of *certification*. The evidence that workers are permitted to *carry out work* in a particular jurisdiction is usually possession of a valid or current *licence*. Often, the two are linked in that the requirements of licence to perform work will require that a person's skills are certified through completion of an appropriate qualification.

For example, in Victoria, a licence to handle the restricted chemical Copper Chromium Arsenate (CCA) requires a person to hold a *CCA Agricultural Chemical User Permit (CCA ACUP)*. This permits them to work with the chemical. However the licence requires the holder to have completed the

appropriate certification, which is completion of the unit of competency FWPSAW3201 Treat timber.

Licensing/registration requirements for particular job functions described in Units of Competency vary significantly. There are variations between States and Territories, and also between individual workplaces, depending on the equipment and processes being used.

Organisations delivering training must determine the applicable licensing requirements associated with the equipment being used, and in the relevant States and Territories. To assist this process, units of competency will contain one of the following statements:

In the case of no licensing requirements:

No licensing, legislative, regulatory, or certification requirements apply to this unit at the time of publication.

In cases where a licence, certification or other regulatory/legislative compliance is required:

Licensing, legislative, regulatory or certification requirements apply to this unit in some states and territories at the time of publication, and may differ according to jurisdiction.

The units of competency in FWP 2.0 do not contain references to specific regulators since these may change over time. However, the following links show the various regulators for high risk licensing in each state at the time of publication.

State	Regulating body	Website link
Western Australia	Department of Commerce	www.commerce.wa.gov.au
Queensland	Workplace Health and Safety Qld	www.worksafe.qld.gov.au
New South Wales	Workcover NSW	www.workcover.nsw.gov.au
Tasmania	Worksafe Tasmania	worksafe.tas.gov.au
South Australia	Safework SA	www.safework.sa.gov.au
Victoria	Worksafe Victoria	www.worksafe.vic.gov.au
Northern Territory	NT WorkSafe	www.worksafe.nt.gov.au
Australian Capital Territory	Worksafe ACT	www.worksafe.act.gov.au

Where units of competency contain regulatory information or align to licensing, RTOs, trainers and assessors must be suitably qualified to deliver the training. This usually means that trainers and assessors must have the relevant vocational competencies, at least to the level being delivered or assessed, and can demonstrate current industry skills directly relevant to the training/assessment being undertaken.

Note that activities within some units of competency may require the incidental use of load shifting equipment, such as forklifts or overhead cranes. In such cases, the relevant units of competency should also be accessed and are to be met concurrently or prior to the achievement of the unit.

FOLS

FOLS is a national system for the certification of safe and effective forest operations in Australia and has been in operation since 2014. It replaces the previous Victorian THOL System and Tasmanian Forest Operator Assessment and Licensing Scheme with one national system. FOLS is administered by ForestWorks on behalf of the forest, wood, paper and timber products industry.

FOLS supports individuals and enterprises to work safely and efficiently. The primary function of FOLS is to assist in reducing the number of fatalities and serious injuries in the forest industry,

specifically in the harvesting sector. FOLS ensures that individual workers hold current qualifications, are trained to regulatory standards and are using the latest knowledge and work practices to ensure the highest level of safety and environmental outcomes.

FOLS maintains a record of operators who are qualified to safely carry out activities in their job role. It is also a database of RTOs/assessors who deliver nationally recognised training relevant to job roles.

The skilled activities that are currently covered by FOLS (and FOLS Cards can be issued upon the completion of corresponding unit of competency) include:

Skilled activity	Corresponding unit of competency
Chainsaw Operator	FWPHAR2207 or FPIHAR2207A - Trim and cut harvested trees
Faller Basic	FWPCOT2236 or FPICOT2236 - Fall trees manually - basic
Faller Intermediate	FWPHAR3220 or FPIHAR3220 - Harvest trees manually - intermediate
Faller Advanced	FWPHAR3221 or FPIHAR3221 - Harvest trees manually - advanced
Machine Operator (Wheel Tractor)	RIIMPO315A or RIIMPO315D - Conduct tractor operations
Machine Operator (Crawler Tractor)	FWPHAR3216 or FPIHAR3216A - Conduct forestry operations using a crawler tractor
Machine Operator (Skidder)	FWPHAR3217 or FPIHAR3217A - Conduct skidder operations
Machine Operator (Loader)	FWPHAR3218 or FPIHAR3218A - Conduct loader operations
Machine Operator (Forwarder)	FWPHAR3206 or FPIHAR3206C - Conduct forwarder operations
Machine Operator (Mechanical Processor)	FWPHAR3210 or FPIHAR3210C - Conduct mechanical processor operations
Machine Operator (Excavator)	FWPHAR3219 or FPIHAR3219A - Conduct excavator operations with grabs
Machine Operator (Feller Buncher)	FWPHAR3207 or FPIHAR3207C - Conduct feller buncher operations
Truck Driver	FWPCOT3261 or FPICOT3261 - Shift forestry logs using trucks
Tree Climber (Basic)	AHCARB204A - Undertake standard climbing techniques
Tree Climber (Advanced)	AHCARB307A - Undertake complex tree climbing

For more information about licensing or certification visit the ForestWorks website www.forestworks.com.au or the FOLS website: fols.forestworks.com.au

Implementation information

What is a training package?

Training packages specify the skills and knowledge required to perform effectively in the workplace. Learning strategies are the responsibility of the trainers and supervisors to develop. In the process, these are required to take into consideration learner needs, abilities and circumstances.

Training packages consist of skill standards, assessment requirements and qualifications for a specific industry use. Each Training Package includes nationally endorsed components and a non-endorsed quality assured Companion Volume Implementation Guide.

The endorsed components include the following:

- Units of competency
- Assessment requirements (associated with each unit of competency)
- Qualifications
- Credit arrangements

Training packages also include skill sets, which are made up of a combination of units of competency related to a licence or regulatory requirement, or a specific industry need. Skill sets are most useful when acquired to build upon a qualification.

Each training package:

- enables assessment of performance against industry-specified criteria
- enables national recognition of workplace competencies
- supports work-related learning and assessment

The endorsed components of training packages can be found on the national register <http://training.gov.au>.

This *Companion Volume Implementation Guide* is available at www.forestworks.com.au. It contains overview information about the entire training package. It also contains key implementation information for use by Registered Training Organisations (RTOs).

Compliance with the Australian Qualifications Framework (AQF)

All units of competency within the Forest and Wood Products (FWP) Training Package are aligned to levels within the Australian Qualifications Framework (AQF). The AQF provides a comprehensive, nationally consistent framework for all qualifications in Australia.

For a full explanation of the AQF, see the AQF Implementation Handbook:

<http://www.aqf.edu.au/wp-content/uploads/2013/05/AQF-2nd-Edition-January-2013.pdf>

AQF Qualifications Pathways Policy

The AQF Qualifications Pathways Policy is the national policy on qualifications pathways and an integral part of the Australian Qualifications Framework. As a whole, they provide capacity to genuinely support students' lifelong learning.

The policy has a focus on maximising the credit that students can gain for the learning already undertaken. It aims to:

- Enhance student progression into and between AQF qualifications
- Recognise the multiple pathways that students take to gain AQF qualifications and that learning can be formal, non-formal or informal
- Support the development of pathways in qualifications design

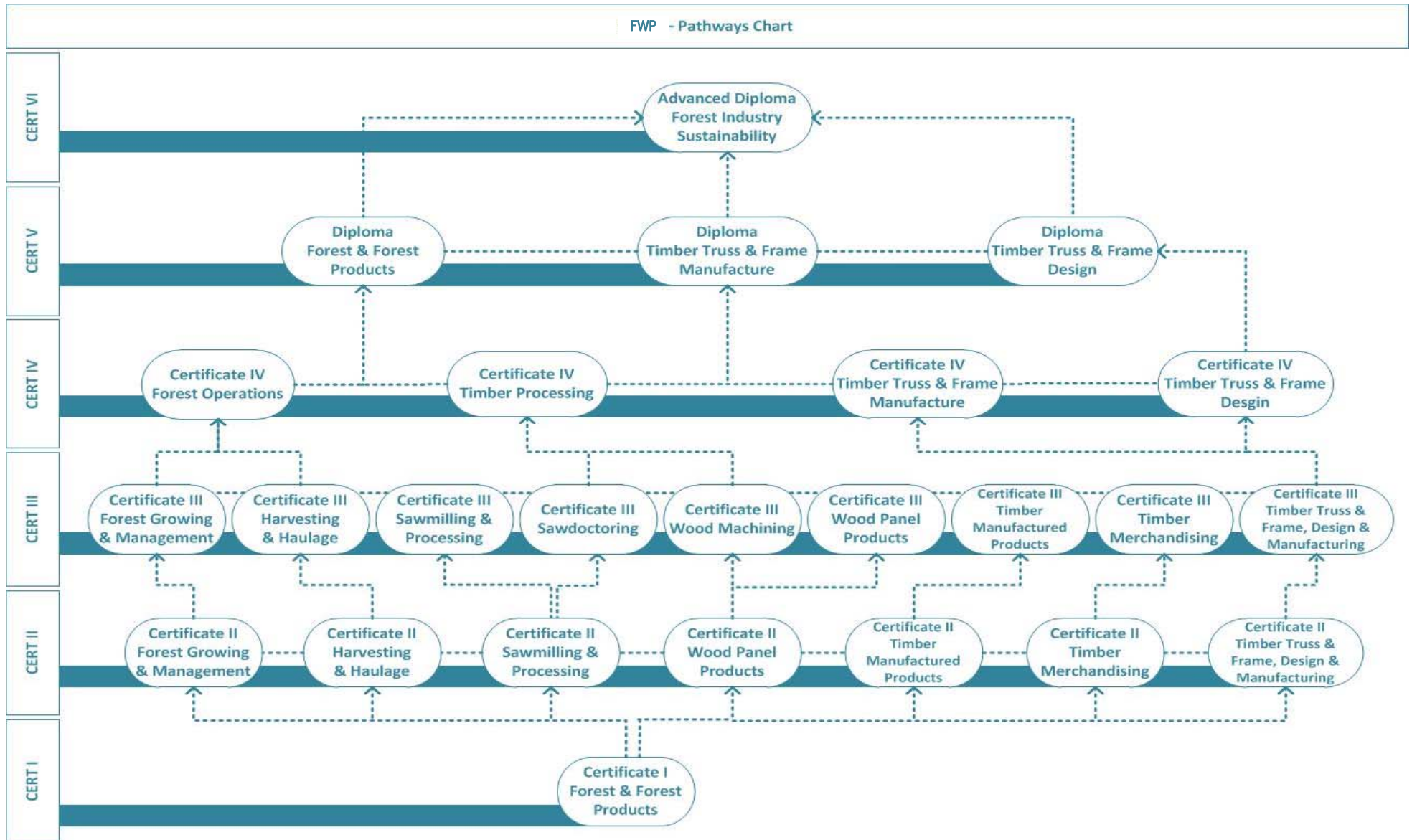
The qualification packaging provides clear and unambiguous pathways to a range of specific job roles within the industry. In line with requirements of the AQF Pathways Policy, all FWP qualifications can be achieved through a variety of pathways and delivery methods, such as on-the-job or through a combination of on- and off-the-job training and recognition processes.

The qualifications in the Forest and Wood Products (FWP) Training Package are available from AQF levels 1 through 6 and are suitable to be undertaken as an Australian Apprenticeship. Learner transition between industry sectors is supported by the FWP Training Package. Entry into qualifications may be gained through progression from a lower level FWP qualification or recognition of existing industry experience or qualifications. Pathways are provided to demonstrate potential movement through the qualifications and across industry sectors. The units of competency, qualifications and skill sets provide pathways and stepping stones to a range of specific job roles or components of job roles within the industry.

Entry into higher education qualifications may be gained by progression from FWP qualifications, recognition of existing industry experience, or qualifications. The Advanced Diploma of Forest Industry Sustainability provides a reciprocal pathway into higher education with respect to Forestry Management programs offered by the University of Melbourne, Southern Cross University and the Australian National University. An example of a reciprocal pathway from higher education to VET would be a technical forester, who holds a university qualification, gaining leadership and sustainability skills through the Advanced Diploma of Forest Industry Sustainability qualification.

The following chart details the multiple pathways students can take to progress into and between qualifications.

Pathways chart



Industry sectors and occupational outcomes of qualifications

The forest and wood products industry is characterised by a mix of small, medium and large enterprises. Some enterprises show a high degree of vertical integration, being involved in activities across the six industry sectors. The industry sectors are:

1. Forest Growing and Management
2. Harvesting and Haulage
3. Sawmilling and Processing
4. Wood Panel and Board Production
5. Timber Manufactured Products
6. Timber Merchandising

The units of competency, skill sets and qualifications in the Forest and Wood Products (FWP) Training Package cover a diverse range of work activities within the industry. Increasingly, advances in technology and the development of new types of timber and wood products mean workers in the forest and wood products industry require different and more sophisticated skills. ForestWorks ISC works with industry, training providers, and government to develop qualifications that cover the full spectrum of job roles in our industry – from Certificates I, II, III and IV, to Diploma and Advanced Diploma.

The purpose of the Certificate I qualification type is to qualify individuals with basic functional knowledge and skills to undertake work, further learning, and community involvement in operational environments of the forest and wood products industry. Certificate I may be used for induction to the industry.

The purpose of the Certificate II qualification type is to qualify individuals to undertake mainly routine work and to offer a pathway to further learning. Generally, Certificate II is used for induction to the industry and is aligned to operator, production and forestry worker job roles.

The purpose of the Certificate III qualification type is to skill up operators in each sector. It qualifies individuals to apply a broad range of knowledge and skills in varied contexts and undertake skilled work. Certificate III serves also as a pathway for further learning. Certificate III is used for experienced operators, technicians and trades workers.

The purpose of the Certificate IV qualification type is to qualify individuals to undertake work in varied contexts using a broad range of specialised knowledge and skills. Certificate IV also serves as a pathway for further learning. Certificate IV is for senior workers and technicians who supervise or lead teams.

The purpose of the Diploma qualification type is to qualify individuals to apply integrated technical and theoretical concepts in a broad range of contexts and undertake advanced skilled or paraprofessional work. The Diploma serves also as a pathway for further learning. The Diploma is suitable for supervisors, managers and specialist job roles.

The purpose of the Advanced Diploma qualification type is to qualify managers and leaders to apply specialised knowledge in a range of contexts and undertake advanced skilled or paraprofessional work. The Advanced Diploma serves also as a pathway for further learning. The skills covered by the Advanced Diploma also form part of other, broader job roles at a strategic level within the industry. Typically, higher educated foresters with experience in the field would undertake the Advanced Diploma to gain skills in leadership and current sustainability initiatives.

Industry sectors and occupational outcomes of qualifications

AQF Level	Forest Growing and Management	Harvesting and Haulage	Sawmilling and Processing	Wood Panel and Board Production	Timber Manufactured Products	Timber Merchandising	
I	<ul style="list-style-type: none"> Arboriculture Worker Forestry Worker 						
II	<ul style="list-style-type: none"> Arboriculture Worker Farm Forestry Worker Forestry Worker Nursery Worker Plantation Establishment Worker Plantation Forest Officer Silviculturist 	<ul style="list-style-type: none"> Bulldozer Operator Chainsaw Operator Excavator Operator Forest Harvester Forwarder Operator Grader Harvesting Technician Mobile Equipment Operator Rigging Slinger Skidder Operator 	<ul style="list-style-type: none"> Kiln Worker Timber Grader Treatment Plant Worker Production Worker Sawmill Worker 	<ul style="list-style-type: none"> Production Worker (Laminates) Production Worker (Panel and Board) Production Worker (Veneer) 	<ul style="list-style-type: none"> Grader Manufacturing Assistant (Timber Products) Saw Operator Timber Manufacturing Worker Timber Products Worker Timber Puller 	<ul style="list-style-type: none"> Customer Service / Sales Assistant (Retail or Wholesale) 	
III	<ul style="list-style-type: none"> Arboriculture Technician Farm Forestry Technician Forestry Technician Nursery Technician Supervisor (Forestry Operations) Tree Planter Silviculturist 	<ul style="list-style-type: none"> Bulldozer Operator Excavator Operator Feller Buncher Operator Forest Harvester Forwarder Operator Harvesting Technician In-field Chipper Operator Loader Operator Log truck driver Mobile Equipment Operator Skidder Operator 	<ul style="list-style-type: none"> Benchman Chipper Operator Head Rig Operator Kiln Operator Machine Operator (e.g. Finger Jointing, Moulding, Planing) Production Technician 	<ul style="list-style-type: none"> Timber Grader Timber Products Technician Treatment Plant Operator Saw Maker Saw Repairer Sawdoctor Wood Machinist Technician Sawyer Sawmilling 	<ul style="list-style-type: none"> Engineered Timber Products Technician / Operator Kiln Operator Production Technician / Operator (Laminates) Production Technician / Operator (Panel and Board) Production Technician / Operator (Veneer) Timber Fabricator Timber Fabricator (Laminates) 	<ul style="list-style-type: none"> Press Operator Jig Setter Machine Operator (e.g. Finger Jointing, Moulding, Planing) Saw Operator Timber Manufactured Products Technician 	<ul style="list-style-type: none"> Customer Service / Sales Assistant (Retail or Wholesale) Customer Service Officer Sales and Merchandising Team Leader Sales and Merchandising Team Leader (Timber Products) Timber Advisor
IV	<ul style="list-style-type: none"> Arboriculture Supervisor Farm Forestry Supervisor Forestry Supervisor Forestry Operations Supervisor 	<ul style="list-style-type: none"> Harvesting Supervisor Harvesting Team Leader Propagation and Stand Health Supervisor Tree Farm Supervisor 	<ul style="list-style-type: none"> Customer Service Manager (Wholesale) Sawmill Supervisor Production Supervisor Treatment Plant Supervisor 	<ul style="list-style-type: none"> Timber Advisor Supervisor Timber Manufacturing Supervisor Timber Supervisor (Wholesale) 			
V	<ul style="list-style-type: none"> Arboriculture Manager Forest Manager Forestry Manager Harvesting Manager 	<ul style="list-style-type: none"> Nursery Manager Plantation Establishment Manager Plantation Manager Production Manager 	<ul style="list-style-type: none"> Sawmill Manager Timber Advisory Manager Timber Manufacturing Manager Tree Farm Manager 	<ul style="list-style-type: none"> Production Manager (Timber Truss & Frame) Designer (Timber Truss & Frame) 	N/A		
VI	<ul style="list-style-type: none"> Community Liaison Officer Designer (Manufacturing and Engineered Wood Products) Environmental Manager Environmental Planner 	<ul style="list-style-type: none"> Forest / Timber Harvester Forest Auditor (e.g. certification provider) Forest Planner Forest Sustainability Manager 		<ul style="list-style-type: none"> Forestry Manager General Manager Plantation Manager Sustainability Manager 	<ul style="list-style-type: none"> Technical Forester Technical Services Officer Technical Services Manager Value Recovery Officer 		

Explanation of any mandatory entry requirements for qualifications

The Forest and Wood Products (FWP) Training Package provides maximum access and progression for learners as there are no entry or prerequisite requirements for most qualifications.

The exception is the pathway for a Designer (Timber Truss and Frame). The Certificate FWP40416 Certificate IV Timber Truss and Frame Design requires achievement of selected units from the FWP30916 Certificate III in Timber Truss and Frame Design and Manufacture.

The FWP50316 Diploma of Timber Truss and Frame Design requires achievement of selected units from FWP40416 Certificate IV Timber Truss and Frame Design.

These unit selections ensure that the specific skill development needs for a Designer (Timber Truss and Frame) are being met for the sector.

The majority of training in the forestry and wood products industry is undertaken in conjunction with an existing workplace role. The training involves competency based learning that supports the learner to acquire skills for performing specified tasks to a specified standard. Work skills can be formally recognised, no matter whether they are gained through training or through direct work activity.

Credit arrangements

Entry into higher qualifications may be gained through progression from a lower level FWP qualification or by recognition of existing industry experience or qualifications.

There are no formal credit arrangements for qualifications in FWP. FWP qualifications such as FWP60114 Advanced Diploma of Forest Industry Sustainability may be recognised for part or full credit in undergraduate and short course programs such as those offered by the University of Melbourne, Southern Cross University and the Australian National University.

Access and equity considerations

The term equity refers to principles of fairness and processes that ensure that all people and all groups of people are able to participate, to have the opportunity to reach their potential, make choices and receive responsive and appropriate products and services. In other words, the destination for all learners is the same but the journey may be different.

Good vocational education and assessment systems provide adjustments to accommodate the learning and assessment needs of individuals. An open mind, common sense, and tailored training and assessment methods to individual circumstances are approaches that ensure the learning outcomes of every individual fulfill the employers and RTOs' standards.

The design of training packages allows every individual to have access to the assessment process so there are no barriers for learners.

An adjustment is any measure or action that a learner requires because of their disability, which has the effect of assisting the learner to access and participate in education and training on the same basis as learners without a disability. A reasonable adjustment takes into account factors such as the nature of the learner's disability, the views of the learner, the potential effect of the adjustment on the learner and others, and the costs and benefits of making the adjustment. It identifies what adjustments might reasonably be made and how they may be put into place.

Assessment processes and techniques should be modified for distance-based learners, be culturally appropriate and suitable to the communication skill level, language, literacy and numeracy capacity of the candidate and the work being performed.

Where applicable, physical resources should include equipment modified for people with specific needs as well as assistance to support their participation in the assessment process.

Access and equity adjustments must align with industry's realistic requirements to undertake the job role.

Foundation skills

Foundation skills describe the language, literacy, numeracy and employment skills that are an essential basis for people to perform in the workplace.

Foundation skills are now identified explicitly in units of competency to assist trainers in supporting learners to achieve successful outcomes. Foundation skills that are not explicitly described in the performance criteria are listed in the 'foundation skills' section of the unit of competency.

The Australian Core Skills Framework (ACSF) can be used wherever performance in the five core skills of learning, reading, writing, oral communication and numeracy is described or discussed. Information about the ACSF can be found on the Department of Industry and Science website:

www.industry.gov.au/skills/AssistanceForTrainersAndPractitioners/AustralianCoreSkillsFramework

ForestWorks ISC has mapped the ACSF benchmarks for the five core skills to qualifications and units of competency within the Forest and Wood Products (FWP) Training Package. The summaries are available at the ForestWorks ISC website along with a range of other resources developed to assist trainers with foundation skill development:

www.forestworks.com.au/skills-standards/resources/find-a-resource

Advice on any workplace health and safety implications in the industry

Safety is a major driver for industry training. The activities of greatest concern in relation to safety are mainly within the forest growing and management and harvesting and haulage sectors, due to the high use of mobile machinery and the nature of the working environment.

Within all six industry sectors, the following areas are of high risk or compliance:

- Manual tree falling
- Loading and unloading log trucks
- Load restraints
- Stacking timber
- Cable logging
- Fatigue management
- Manual handling
- Forklift in motion/ transporting goods
- Chemical hazards
- Other chainsaw or pole saw activities
- Slips, trips, falls

Workplace health and safety requirements must in line with applicable Commonwealth, State or Territory legislation and regulations, and organisational safety policies and procedures, which may include:

- Personal protective equipment and clothing
- Safety equipment
- First aid equipment
- Firefighting equipment
- Hazard and risk control
- Fatigue management
- Elimination of hazardous materials and substances
- Safe forest practices, including required actions relating to forest fire
- Manual handling including shifting, lifting and carrying

The regulations for workplace health and safety may differ slightly from state to state, throughout Australia. A regulating body exists in each state and territory to enforce the local occupational health and safety laws. For further information about workplace health and safety laws and regulations in your local area, please see the corresponding website:

ACT - http://www.worksafe.act.gov.au/health_safety

NSW - <http://www.workcover.nsw.gov.au>

VIC - <http://www.worksafe.vic.gov.au/>

QLD - <http://www.deir.qld.gov.au/workplace/index.htm#.U0XZ4GCKC70>

SA - <http://www.safework.sa.gov.au/>

WA - <http://www.commerce.wa.gov.au/WorkSafe/>

TAS - <http://www.worksafe.tas.gov.au/home>

NT - <http://www.worksafe.nt.gov.au/home.aspx>

Resource and equipment list

The resources and equipment required for a unit of competency are listed in the assessment requirements of individual units of competency.

Equipment should be made available to the student by the RTO delivering the training. All equipment must meet Australian standards for safety and be well maintained.

Learning resources are available for certain units of competency within the Advanced Diploma of Forest Industry Sustainability. For further information about resources available, please see the ForestWorks website:

<http://www.forestworks.com.au/skills-standards/resources/find-a-resource>

Legal considerations for learners in the workplace/on placements

The majority of training in the industry is undertaken by workers once they are employed. As a consequence, the legal considerations of these learners is covered by their employment contract. In the harvesting and haulage sector, sub-contractors may have a contract arrangement in place with the forestry owner and need to be aware of their legal obligations as sub-contractors.

Links

Innovation hub

www.forestworks.com.au/innovation

ForestWorks ISC website

www.forestworks.com.au/

ForestWorks website

www.forestworks.com.au/ltd

Training.gov.au

training.gov.au/Home

ForestWorks resources

www.forestworks.com.au/skills-standards/resources/find-a-resource

Forest Operator Licensing System website

fols.forestworks.com.au



Australian Government

Department of Education and Training

ForestWorks' activities are assisted by funding provided by the Commonwealth Government through the Department of Education and Training.

National Office

559A Queensberry Street
(PO Box 612)
North Melbourne, Victoria 3051

FRECALL	1800 177 001
Melbourne	03 9321 3500
Sydney	02 8898 6990
Launceston	03 6331 6077
Adelaide	08 8219 9028

forestworks@forestworks.com.au
www.forestworks.com.au

ABN 39 946 785 543